

KDP DIAPHRAGM PUMPS



The KDP is a mechanical diaphragm pump that uses a heavy duty gear box coupled to an eccentric block to actuate the diaphragm. It is belt driven by pulleys which enables it to use a variety of drive options.

With its heavy duty construction, ability to run dry and self-prime the KDP pump is suitable for a wide range of applications including dewatering, transfer, oil skimming & oil/water separation.

84 **OVERVIEW**

85 **KDP 25**

86 **KDP 32**

87 **KDP 38**

88 **KDP 50**

89 **KDP 76**

90 **SERVICE KITS**



OIL WATER SEPARATORS



WASTE WATER TREATMENT

KDP DIAPHRAGM PUMPS



Application: Dewatering excavation, Raw sewage, Pool maintenance and construction, Waste treatment plants, Oil skimming, Bore desludging, Oil/Water separators, Machine sumps, Priming large centrifugal pumps, Industrial wastes, Liquid manure, Septic tank cleaning, Drum emptying, Abattoirs and poultry processing & Spillage mop up.

Features:

- Suction lifts to 7.5m
- Rapid self priming
- Will run dry without damage
- Heavy duty
- Will operate on snore
- Will handle abrasive liquids
- Will pass solids up to 80% port size
- Compact construction
- TEFC electric motors fitted as standard
- Special electric motor enclosures as an options

DIAPHRAGM PUMPS

KDP OVERVIEW



MATERIALS OF CONSTRUCTION		
COMPONENT	STANDARD	OPTIONAL
Wetted (Casing and Ports)	Aluminium	Cast Iron / 316 Stainless Steel
Diaphragm	Buna-N (NITRILE)	Neoprene / Viton
Flap Valve / Gasket	Buna-N (NITRILE)	Polyutherene
Valve Seat	316 Stainless Steel	



CARRY FRAME
All sizes can be fitted with a carry frame



KDP50 and KDP76 can be supplied with a petrol engine which enables increased portability in applications such as:

PETROL/DIESEL
Site Dewatering
Excavation Dewatering
Pool Maintenance / Construction
Construction Sites



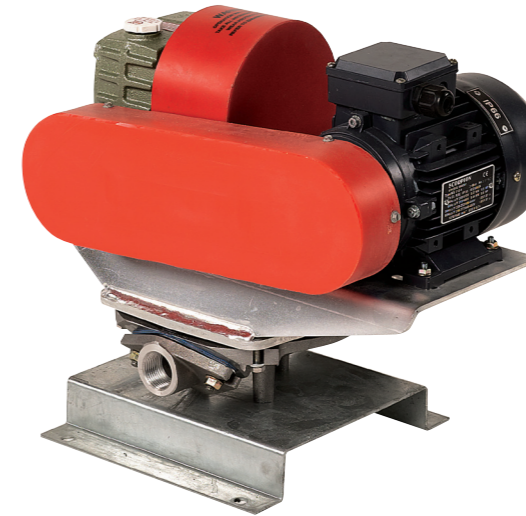
All pump sizes are available with the following electric motor options:

ELECTRIC
240V (Single Phase)
415V (Three Phase)
415V (Three Phase), Ex'e'
415V (Three Phase), Ex'd'

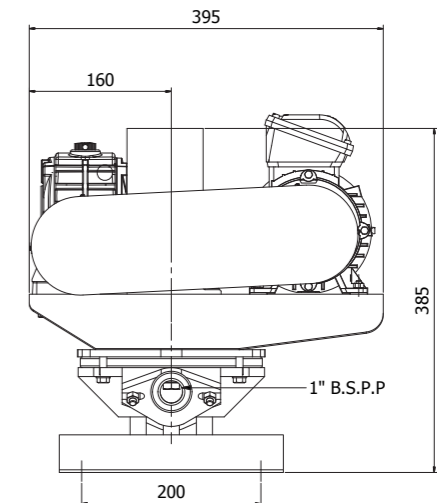
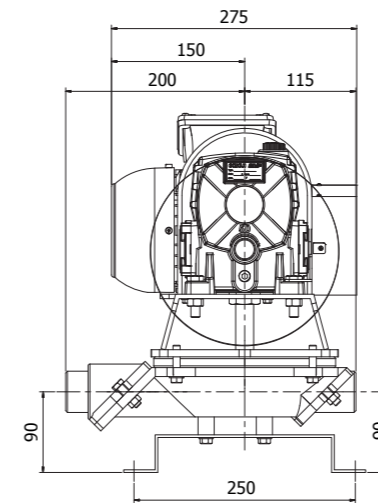


DIAPHRAGM PUMPS

KDP 25



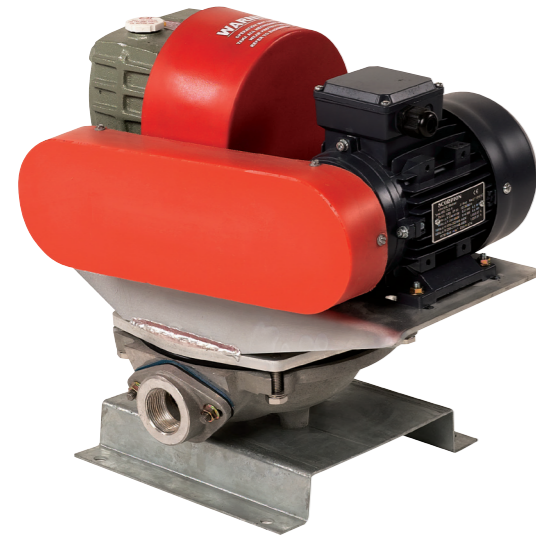
KDP 25	
Model No.	KDP25
Connections	25mm(1")
Normal flow rate	16-25 l/min
Suction lift	7.5m
Discharge head	6.0m
Solid size	15mm
Motor size	0.37kW
Weight	25kg



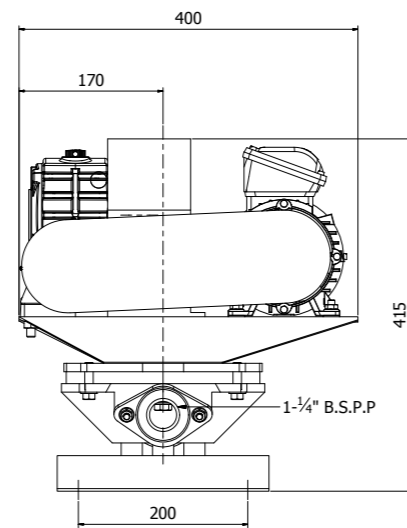
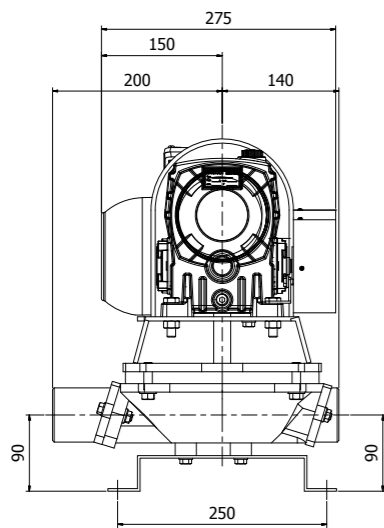
PART NO.	MODEL NO.	DESCRIPTION	TYPE	AMPS	KW
660000	KDB25-100	KD Pump with no motor (Bare)	Bare	N/A	N/A
660006	KDB25-150	KD Pump with no motor (Bare)	Bare	N/A	N/A
660060	KDS25-100	KD Pump with 240 Volt Motor	240 Volt	2.8	0.37kW
660066	KDS25-150	KD Pump with 240 Volt Motor	240 Volt	2.8	0.37kW
660096	KDT25-100	KD Pump with 415 Volt Motor	415 Volt	1.2	0.37kW
660102	KDT25-150	KD Pump with 415 Volt Motor	415 Volt	1.2	0.37kW
660114	KDTE25-100	KD Pump with 415 Volt Ex(e) Motor	415 Volt Ex E	1.2	0.37kW
660138	KDTE25-150	KD Pump with 415 Volt Ex(e) Motor	415 Volt Ex E	1.2	0.37kW
660144	KDTD25-100	KD Pump with 415 Volt Ex(d) Motor	415 Volt Ex D	1.2	0.37kW
660174	KDTD25-150	KD Pump with 415 Volt Ex(d) Motor	415 Volt Ex D	1.2	0.37kW

DIAPHRAGM PUMPS

KDP 32



KDP 32	
Model No.	KDP32
Connections	32mm(1 1/4")
Norminal flow rate	33 l/min
Suction lift	7.5m
Dicharge head	6.0m
Solid size	20mm
Motor size	0.37 kW
Weight	30kg



PART NO.	MODEL NO.	DESCRIPTION	TYPE	AMPS	KW
660012	KDB32-200	KD Pump with no motor (Bare)	Bare	N/A	N/A
660072	KDS32-200	KD Pump with 240 Volt Motor	240 Volt	2.8	0.37kW
660108	KDT32-200	KD Pump with 415 Volt Motor	415 Volt	1.2	0.37kW
660150	KDTE32-200	KD Pump with 415 Volt Ex(e) Motor	415 Volt Ex E	1.2	0.37kW
660180	KDTD32-200	KD Pump with 415 Volt Ex(d) Motor	415 Volt Ex D	1.2	0.37kW

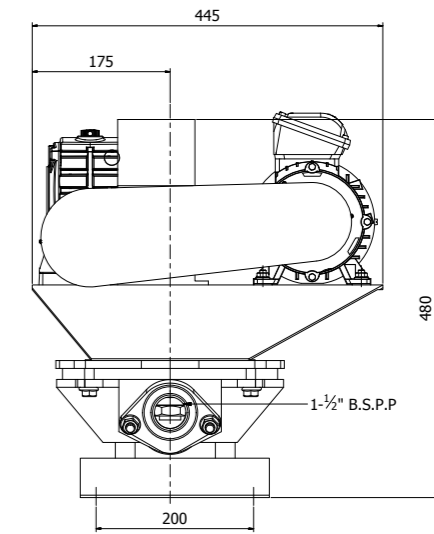
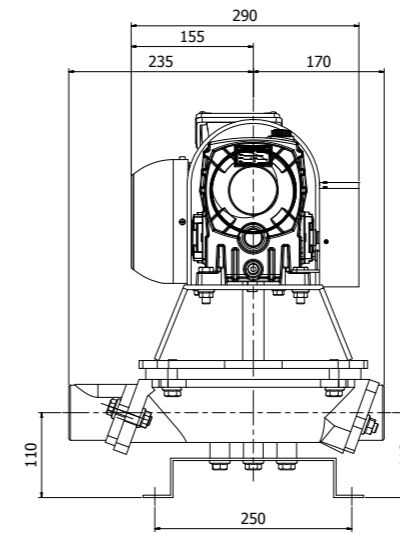
KDP
DIAPHRAGM PUMPS

DIAPHRAGM PUMPS

KDP 38



KDP 38	
Model No.	KDP38
Connections	38mm(1 1/2")
Norminal flow rate	50 l/min
Suction lift	7.5m
Dicharge head	6.0m
Solid size	25mm
Motor size	0.75 kW
Weight	42kg



PART NO.	MODEL NO.	DESCRIPTION	TYPE	AMPS	KW
660018	KDB38-300	KD Pump with no motor (Bare)	Bare	N/A	N/A
660078	KDS38-300	KD Pump with 240 Volt Motor	240 Volt	4.75	0.75kW
660120	KDT38-300	KD Pump with 415 Volt Motor	415 Volt	1.77	0.75kW
660156	KDTE38-300	KD Pump with 415 Volt Ex(e) Motor	415 Volt Ex E	1.77	0.75kW
660186	KDTD38-300	KD Pump with 415 Volt Ex(d) Motor	415 Volt Ex D	1.77	0.75kW

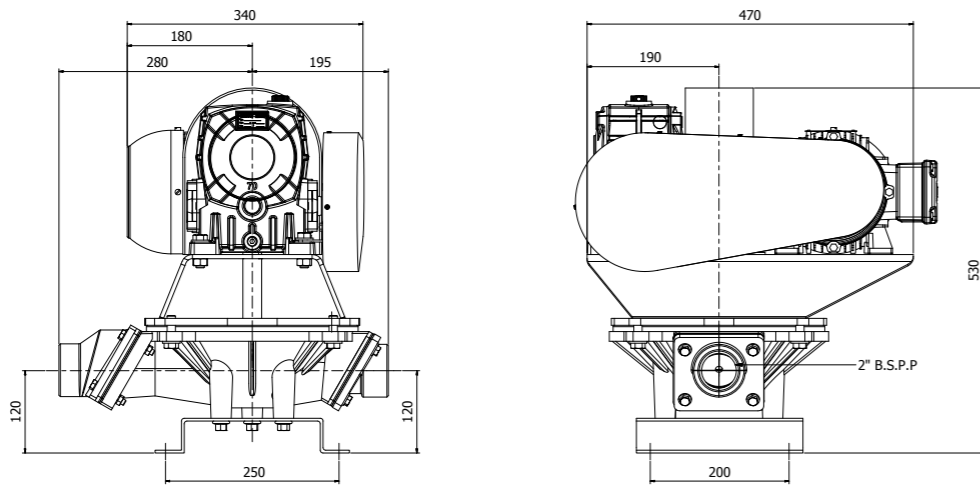
DIAPHRAGM PUMPS

KDP 50

KDP DIAPHRAGM PUMPS



KDP 50	
Model No.	KDP50
Connections	50mm(2")
Norminal flow rate	100 l/min
Suction lift	7.5m
Dicharge head	6.0m
Solid size	35mm
Motor size	1.1 kW
Weight	55kg

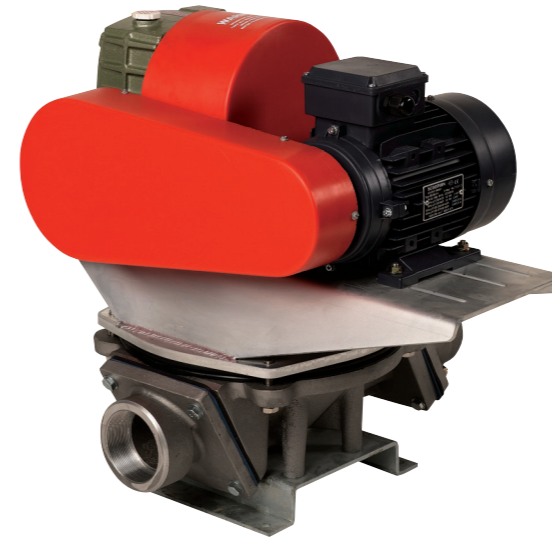


PART NO.	MODEL NO.	DESCRIPTION	TYPE	AMPS	KW
660024	KDB50-600	KD Pump with no motor (Bare)	Bare	N/A	N/A
660036	KDD50-600	KD Pump with Diesel Engine	Diesel	N/A	N/A
660048	KDE50-600	KD Pump with Petrol Engine	Petrol	N/A	4hp
660084	KDS50-600	KD Pump with 240 Volt Motor	240 Volt	6.61	1.1kW
660126	KDT506-600	KD Pump with 415 Volt Motor	415 Volt	2.6	1.1kW
660162	KDTE50-600	KD Pump with 415 Volt Ex(e) Motor	415 Volt Ex E	2.6	1.1kW
660192	KDTD50-600	KD Pump with 415 Volt Ex(d) Motor	415 Volt Ex D	2.6	1.1kW

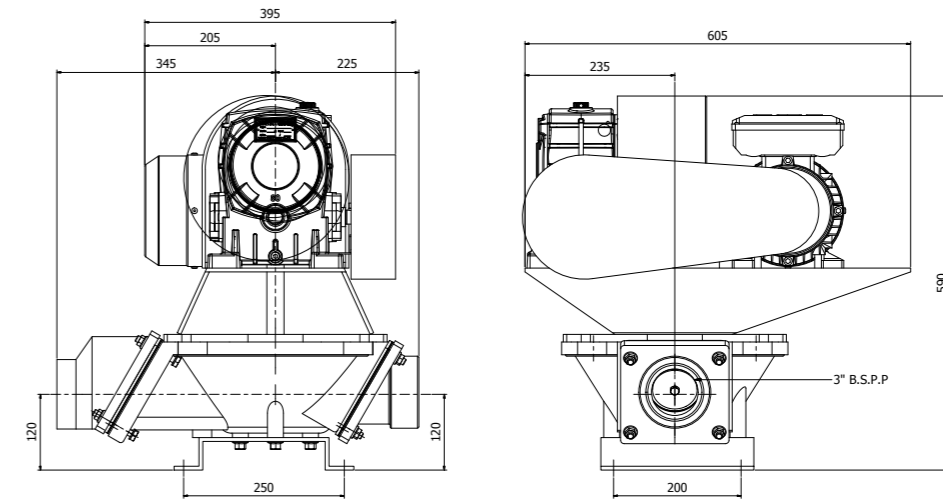


DIAPHRAGM PUMPS

KDP 76



KDP 76	
Model No.	KDP76
Connections	76mm(3")
Norminal flow rate	210 l/min
Suction lift	7.5m
Dicharge head	6.0m
Solid size	50mm
Motor size	1.5 kW
Weight	72kg



PART NO.	MODEL NO.	DESCRIPTION	TYPE	AMPS	KW
660030	KDB76-120	KD Pump with no motor (Bare)	Bare	N/A	N/A
660042	KDD76-120	KD Pump with Diesel Engine	Diesel	N/A	N/A
660054	KDE76-120	KD Pump with Petrol Engine	Petrol	N/A	4hp
660090	KDS76-120	KD Pump with 240 Volt Motor	240 Volt	8.77	1.5kW
660132	KDT76-120	KD Pump with 415 Volt Motor	415 Volt	3.4	1.5kW
660168	KDTE76-120	KD Pump with 415 Volt Ex(e) Motor	415 Volt Ex E	3.4	1.5kW
660198	KDTD76-120	KD Pump with 415 Volt Ex(d) Motor	415 Volt Ex D	3.4	1.5kW

DIAPHRAGM PUMPS

SERVICE KITS

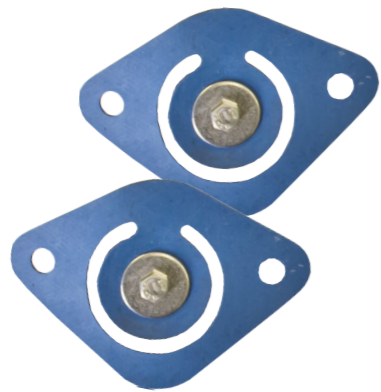
KDP DIAPHRAGM PUMPS



1 x Vee Belt



1 x Diaphragm



2 x Flap Valve Assemblies



2 x Diaphragm plate o-rings or gaskets

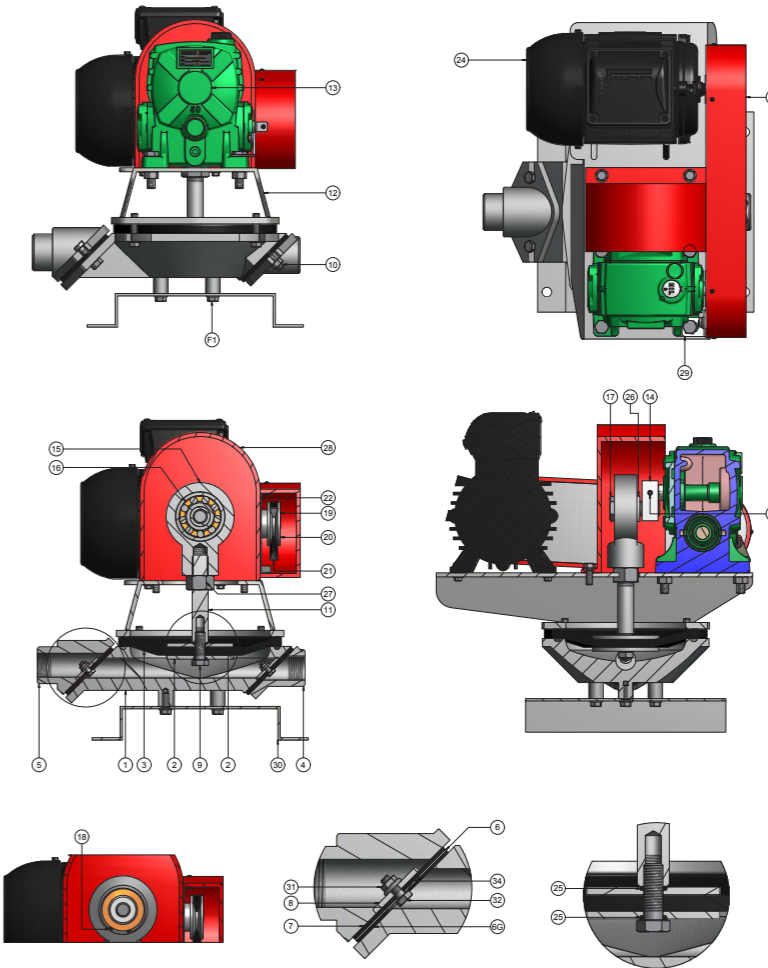


2 x Flap Valve Gaskets

PART NO.	DESCRIPTION
680090	KWIKFLO KDP-25 SERVICE KIT
680176	KWIKFLO KDP-32 SERVICE KIT
680250	KWIKFLO KDP-38 SERVICE KIT
680332	KWIKFLO KDP-50 SERVICE KIT
680412	KWIKFLO KDP-76 SERVICE KIT



KDP
DRAWING



ITEM NO.	DESCRIPTION
1	Aluminium Bowl
2	Diaphragm plate
3	Nitrile diaphragm
4	Aluminium suction port
5	Aluminium discharge port
6	Stainless steel valve seat
7	Nitrile valve seat gasket
8	Nitrile flap valve
9	Diaphragm plate bolt
11	Connecting rod
12	Drive support housing
13	Worm gear speed reducer - Ratio 30:1
14	Eccentric block
15	Eccentric bearing housing
16	Bearing - 6305
17	Eccentric bolt & washer
18	Circlip

ITEM NO.	DESCRIPTION
19	Gearbox pulley
20	Motor pulley
21	V-Belt
22	Pulley guard backplate - SS 304
23	Pulley guard - Plastic
24	Electric motor
25	Nitrile O-Ring
26	Eccentric bolt spacer
27	Connecting rod nut
28	Eccentric guard - Plastic
29	Pulley guard backplate support bracket
30	Baseplate - Mild steel - Galvanised
31	Flanged hex nut
32	Hex head bolt
33	Grub screw
34	Washer