



TRILLIUM FLOW TECHNOLOGIES

VERTICAL, IN-LINE, SINGLE-STAGE, OVERHUNG PUMP

gabbioneta pumps 

 Termomeccanica
Pompe

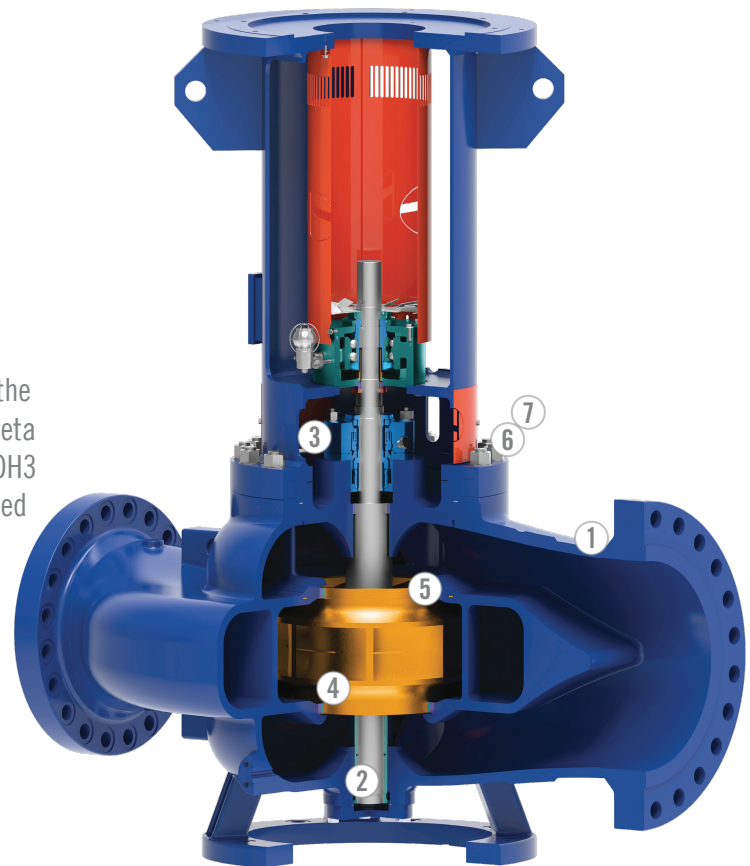
API-610

TYPE: OH3

TRILLIUM PUMP MODEL: DSIL

OVERVIEW

Trillium Flow Technologies updated BSD pump range builds on the engineering excellence, innovation, and heritage of our Gabbioneta Pumps® brand. Our expertise in designing and manufacturing OH3 pumps dates back to the 1970s, with thousands of units installed worldwide. This API-compliant OH3 pump range is an in-line, vertically suspended, one-stage pump with a double suction first stage impeller.



KEY FEATURES

API 610 compliant

① Design optimised for inline installation to accommodate piping stress

② Heavy-duty shaft to minimize rotor deflection and maximize uptime

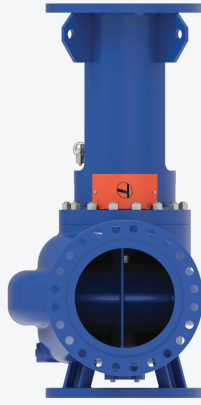
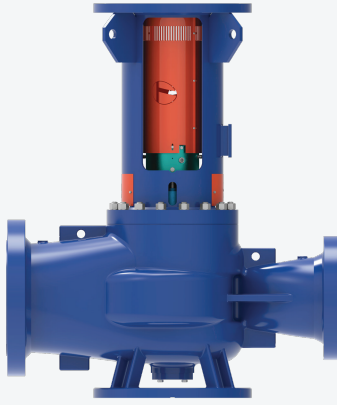
③ API 682 compliant seal chamber

④ Closed impeller and case wear rings to minimise axial thrust

⑤ Double suction impeller to minimise NPSHr

⑥ Back pull-out design for simple maintenance

⑦ Back pull-out design also allows quick hydraulic re-rates



OPTIONS

All API material options: S-4, S-5, S-6, S-8, C-6, A-8, D-1, D-2, and bespoke options

Bearing arrangements to accommodate oil, mist, or grease (application dependent)

Reverse rotation devices

MAIN APPLICATIONS

Refinery Processing

Petrochemical Processing

Tank Drain

Facility Services

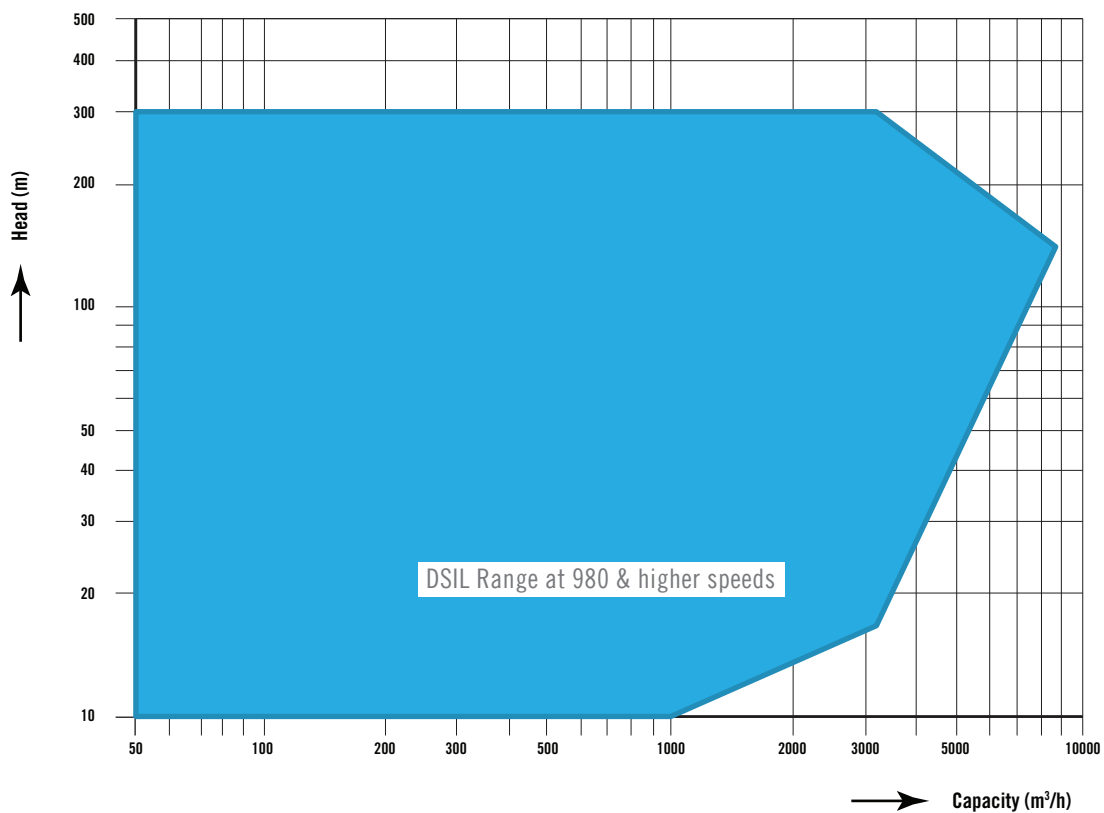
OPERATING RANGE

Capacity: up to 6,000 m³/hr, 26,400 USGPM

Head: up to 300 m, 1,000 ft

Temperature: up to 427°C, 800°F

Speed of rotation: Up to 4,000 RPM

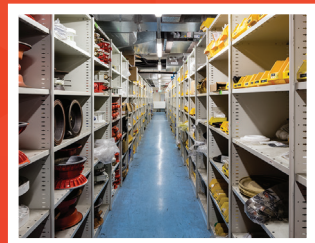


WE'RE ALL ABOUT EXPERIENCE.

1300 255 786 | allpumps.com.au

WHY USE ALL-PUMPS?

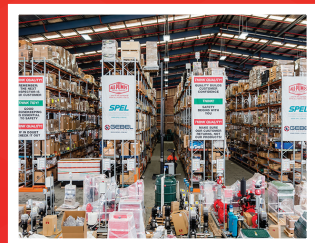
Locally
stocked
product and
spare parts



Trusted
application
expertise from
experience built
up since 1972



Comprehensive
engineering
capability for
turnkey
packages



Full
maintenance
and repair
offering



Leading
Quality
Products





YEARS OF EXPERIENCE

📍 Silverwater NSW 2128
✉ sales@allpumps.com.au

☎ 1300 255 786
🌐 www.allpumps.com.au