

We're All About Experience  
allpumps.com.au



# MINING SOLUTIONS

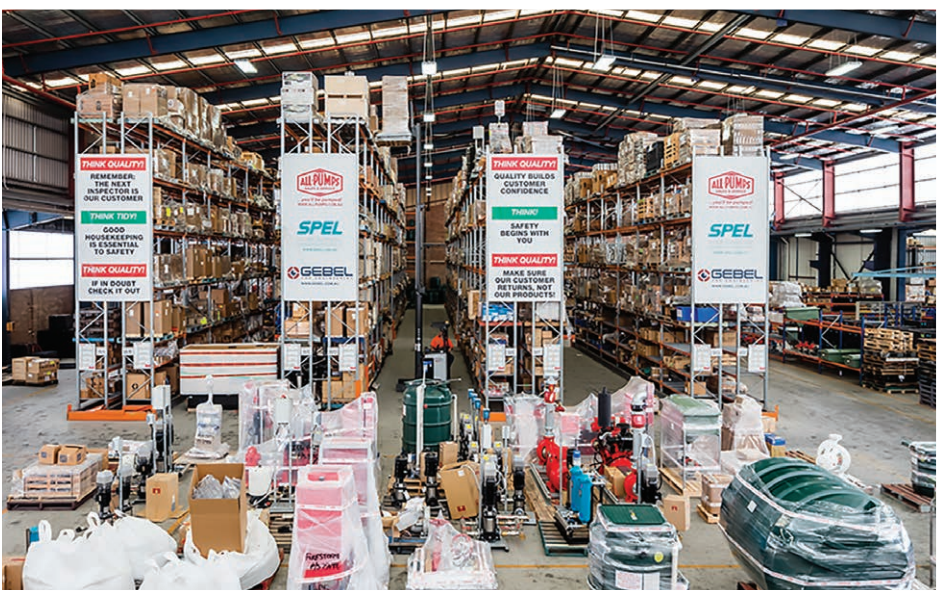




# 50 YEARS OF MAKING BIG THINGS HAPPEN

We're a family-owned company with proven processes built on decades of experience. We take pride in increasing our reliability and improving clients' uptime through innovative and economical solutions.





## OUR PARTNERS

All-Pumps is a partner to local and global industry-leaders, making sure to meet the needs of every mining project.



RioTinto

BHP



Newmont™

GLENCORE



CENTENNIAL



MMMG

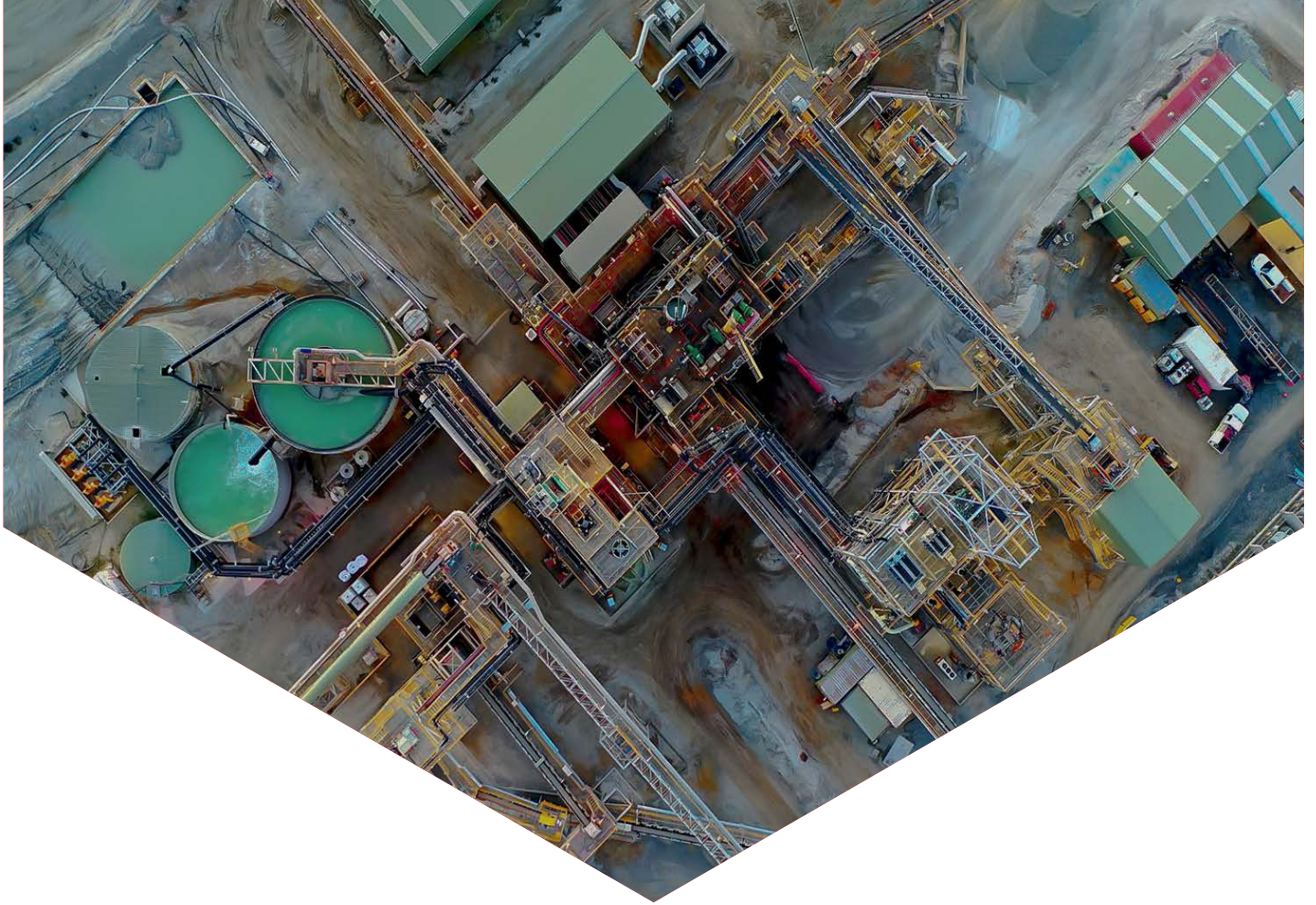
OZ



Fortescue.



THIESS



# WHY DO MINES CHOOSE ALL-PUMPS?



## ENGINEERING & DESIGN EXPERTISE

Our experienced in-house engineering can facilitate all aspects of design, including mechanical, electrical and system engineering, providing certainty in the selected pump solution.



## RELIABLE DELIVERY

With nationwide logistics hubs, we are able to leverage over \$50 million worth of stock throughout Australia. Our own fleet of drivers and order tracking system make deliveries prompt and seamless.



## LOWEST COST OF OWNERSHIP

All-Pumps offers a wide range of pump brands and technologies, meaning we can select the most reliable and long-term solution for you without any specific loyalty to a brand or type of pump.

# CONTENTS

Our Partners	03	The All-Pumps App	18
Why Do Mines Choose All-Pumps?	04	Air-Operated Diaphragm Pumps	19
About All-Pumps	06	Why Tsurumi Pumps Outlast Competitor Pumps	32
Capability Statement	07	Submersible Pumps	33
Our Core Competencies	08	Horizontal Multistage Pumps	39
Quality All the Way	09	Mine Dewatering Pumps	41
Environment and Safety	10	Magnetic Drive Pumps	44
Design Engineering	11	Dewatering Tanks and Pump Stations	47
Service and Repair	13	Process Pumps	51
Repair Form	14	Slurry Pumps	53
Maintenance Services in Our Workshop	15	Hose Pumps	55
On-site Commissioning and Installation	16	Workshop and Lubrication	58
Laser Alignment and Inspection	17	Store Support and Spare Parts	61



## ABOUT ALL-PUMPS



**We offer innovative solutions utilising products from our diverse range of world wide market leading suppliers.**

Our professional application of knowledge and experience has resulted in an exceptional level of customer service.

We pride ourselves in our commitment to every customer through offering expertise and finding the best pump for your application and site requirements.

We believe the hard work starts after the order is received, a great sales pitch means little without effective execution.



### EXPERIENCE

We have a solid family-based foundation with more than 50 years of experience.



### INVENTORY

We have comprehensive stock levels to allow us to promptly dispatch product.



### ECONOMIES OF SCALE

Our leading market position allows us the ability to acquire in volume and pass those benefits onto our customers.



### FRIENDLY SERVICE & ADVICE

Call us on 1300 255 756 to speak with one of our friendly team members.



### BREADTH OF RANGE

Our inclusive range of products are sourced locally and globally from market leading manufacturers.



### TIMELINESS

We know that time is critical and our fleet of drivers are committed to efficient and safe deliveries.



### ENGINEERING CAPABILITY

In-house design and engineering and fabrication capabilities for a customised solution for your requirements.



### MORE TO COME

We take industrial pumps seriously and continuously source product to add to our range.



### FEEDBACK

We listen to what you say and our customer service team can assist you with achieving a satisfactory outcome.



# CAPABILITY STATEMENT



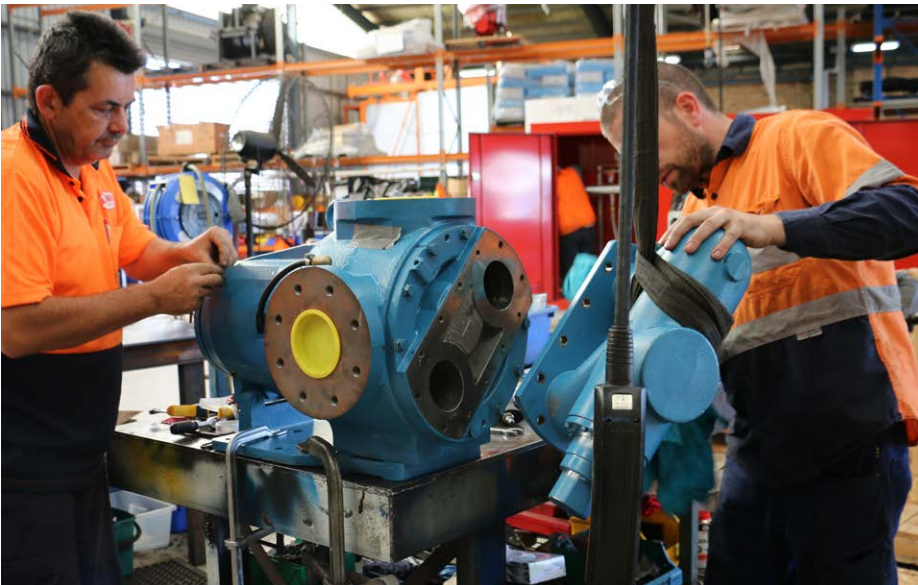
**We're here to help more people, in Australian industries, more often.**

We want to help you find the best pump solution for your unique situation. Our team are qualified and experienced with an in-depth knowledge of pumps and specific requirements for a wide range of industries and applications.

With a large network of local and international partners we are confident to offer quality solutions and after sales support in a time sensitive manner.

All-Pumps products and custom solutions can be seen in a diverse range of industries including tunnelling, mining, infrastructure, food and beverage, manufacturing and general industry.

At All-Pumps, we know that we are only as good as our people, and that's why we have such a diverse array of staff in multiple locations ready, willing and able to assist you. We all share the same goal of helping you when you are under the pump through consistent high level customer service, attention to detail, quality products and service built on the foundation of strong long term relationships.



**WE STOCK WHAT WE SELL**



**WE SERVICE WHAT WE SELL**



**WE CUSTOMISE TO WHAT YOU NEED**

# CORE COMPETENCIES



## ENGINEERING SELECTION PROCESS

We have access to over 28 million pump configurations. When you come to us with an application we use our 50 years of experience to select the best suited pump for your duty.



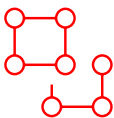
## ALL ABOUT EXPERIENCE

Our bank of successful applications is over 50 years in the making. Drawing on a wealth of experience we help customers overcome issues and increase reliability. When we build something, its world class.



## REFRESHING CUSTOMER CARE

All businesses talk about customer service. We think it should be simple, we measure response times obsessively and make sure we do what we say. Our hard work starts once your order is placed.



## CUSTOMISATION

Our team of engineers, project managers, fabricators, electricians and fitters allow us to build a skid or package for your mine site conditions to work with your operating systems.



## GENEROSITY

Our mindset is to help. We always seek to give back to the communities that help our business thrive and also happen to have the worlds best promos.

# QUALITY ALL THE WAY

Australian family-owned and -operated since 1972, All-Pumps specialises in superior quality pumps and pumping systems. Our cutting-edge solutions meet the unique design requirements of our customers whilst conforming to the most stringent quality control standards and providing excellence in product performance.

With over 50 years of experience to draw from, an innovative mindset and an extensive and trusted network of local and international suppliers and partners, All-Pumps has the capabilities and knowledge to support you at every step.

It's not only our products that meet our own exceptional standards, it's every detail of the customer experience from initial discovery, to design, development and delivery to meet your deadlines. We are ready to partner with you on your next project, offering professional expertise at every step of the way.

Our dedicated product specialists, procurement and industry professionals source innovative and cutting edge products from around the world, ensuring our suppliers are aligned with our values and commitment to social, corporate and environmental responsibilities.

We are confident to offer a range of quality pumps and pumping equipment that we ensure meet the needs of our customers to provide a superior, more efficient, cost effective and better engineered solution.

All-Pumps is the premier solutions provider up for the challenge of creating custom solutions for any need across any industry.



**Our quality management has entitled us to be fully accredited to international standards in the following:**

- ISO 9001:2015 (Quality)
- ISO 14001:2015 (Environmental)
- ISO 45001:2018 (Health & Safety)

Quality	Environment	Health & Safety
ISO 9001	ISO 14001	AS/NZS 4801

## ENVIRONMENT & SAFETY

As a growing Australian business, we hold a commitment to effecting positive change, both socially and environmentally. We apply ourselves to develop innovative ways to limit the environmental impact of our projects.

We incorporate environmental good practice into our core business plans and management processes and strive continuously to review and improve our environmental performance.

Sourcing products globally, we dedicate ourselves to upholding and maintaining minimum standards encompassing labour, health, safety, environmental management, and ethical practices throughout our extensive supply chain.



## PRACTICE OF SAFETY MANAGEMENT

All-Pumps is dedicated to fostering a work environment where our employees feel safe and productive. We take an active health, safety and wellbeing-first approach to everything we do.

From daily operations to complex logistical projects, safety and wellbeing underpins our business and that starts with a culture built on the principle of ensuring that health and safety are front and foremost.

We understand that we are all responsible for safety. Not only our own safety, but those around us as well. It's about keeping a commitment and staying accountable to every other team member and ensuring that we keep each other out of harm's way so that we can all return home safely to our loved ones at the end of the day.

Our commitment to safety management includes, but is not limited to the following.

- Assess risks and plan work activities to eliminate or control foreseeable hazards or risks
- Comply with relevant WH&S, workplace injury management and workers compensation legislation and regulations
- Establish measurable objectives and targets for continuous improvement
- Consult with employees and subcontractors and disseminate WH&S information
- Make this SMP available to all employees
- Maintain the workplace, plant and equipment in a safe condition
- Provide appropriate instruction and training for employees and subcontractors to assist them in avoiding unsafe situations, unsafe work practices and the use of defective equipment
- Provide adequate facilities for outdoor staff



## DESIGN ENGINEERING

**All-Pumps has a dedicated experienced engineering team who work closely with the customer to deliver a comprehensive solution to maximise productivity and reduce operational costs.**

For custom designs suited to unique requirements, we have a streamlined process that will ensure every customer gets exactly the system they need. Our team of highly talented in-house designers work alongside the salespeople and the client to produce the best solution possible.

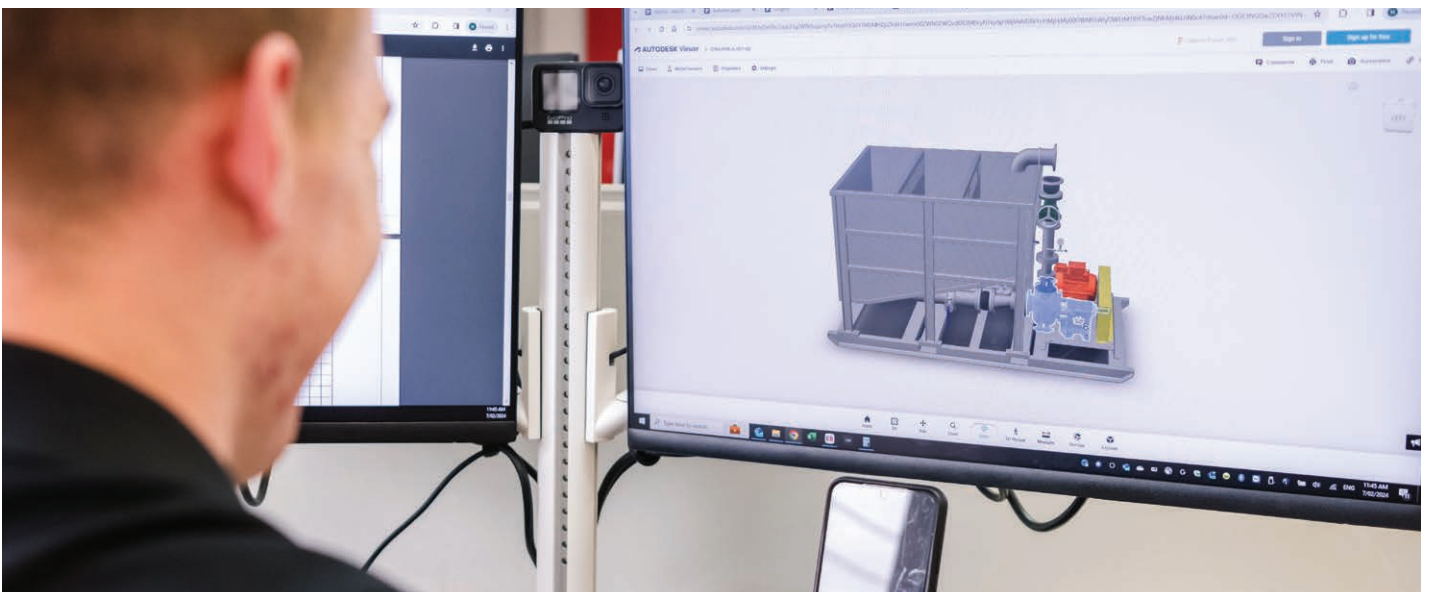
We design and customise complete packaged pumping solutions ranging from the small and simple to large and complex. You can be confident that every solution offered is backed by our 50 years of experience and an uncompromised commitment to quality and a fixation on reliability.

Through the use of multi-platform engineering software All-Pumps is equipped to design and detail a tailored cost effective solution to improve productivity and reduce downtime.

Our dedicated projects team provides cutting edge innovation and excellence in all aspects of project design and development, to deliver uncompromised reliability, efficiency, safety and compliance.

**When choosing to partner with All-Pumps to design and develop a high-quality packaged pumping system you can rest assured that we will employ the resources that we have available including:**

- ✓ 3D modelling software
- ✓ Detailed drawings and diagrams of pumps and systems
- ✓ Pump and controller trouble shooting guides
- ✓ Project management
- ✓ Testing to AS2417 Standards
- ✓ FEA – Finite Element Analysis



## DESIGN ENGINEERING

The All-Pumps design team is committed to continual improvements in both quality and design.

We are continuing the standard of excellence with the latest equipment to ensure the development of high quality packaged pumping products.

Our extensive in-house based facilities allow us total control over every project from initial concept to solution delivery.

With our comprehensive product range coupled with over 50 years of experience we can design and manufacture a bespoke engineered solution to solve the most complex application.

# WE CAN MANUFACTURE AN ENGINEERED SOLUTION TO SOLVE THE MOST COMPLEX APPLICATION.



## DESIGN SELECTION

We make the complex simple through our years of experience, we ensure to select the pump resulting in the lowest cost of ownership for the application.

## PROJECT MANAGEMENT

Total project management is offered for oversight from inception to completion for peace of mind and quality control.

## QUALITY ASSURED

Our quality management process is detailed and specific, allowing us to exceed various accreditation requirements for international standards.

## STOCK HOLDING

We have comprehensive stock levels which allows us to promptly dispatch product.

## MANUFACTURING

Purpose built workshops nationally facilitate all manufacturing requirements and all types of pump maintenance and rebuilds regardless of brand or size.

## DRAFTING

We have access to over 28 million pump configurations to draw from in the drafting stage to ensure that the best outcome is achieved.

## FINITE ELEMENT ANALYSIS

Through the use of FEA (Finite Element Analysis) our engineers evaluate the suitability, safety and integrity of the proposed design. We use our experience to build solid and durable pump systems.

## SERVICE

We strive to continually improve our service and prioritise our customers' needs to achieve a seamless and reliable experience.

## SERVICE

Our investment in training and partnerships with the world's best brands allows us to deliver the best possible service and solutions.

## SERVICE & REPAIR

After sales service and support is a key area of expertise for the team at All-Pumps. When it comes to your pumps and associated equipment, it is vital to have reliable, efficient and easy access to service, maintenance and repair.

We are equipped to offer in-house repair services in our extensive dedicated workshop and provide quick turnaround, factory tested maintenance and rebuilds, and restoration of industrial pumps to like-new condition whilst minimising downtime for your facility.

Understandably not all works can be carried out at our facility, so on-site service and maintenance are another way that we can assist in keeping you up and running. Whether your pump is repaired in our workshop or we come to you, All-Pumps delivers quality and excellence that has put us at the pinnacle of the pump service industry. These encompass a range of essential tasks including but not limited to replacing mechanical seals, pump and motor gearbox realignment, pump removal and transport, troubleshooting and accurate laser alignment. A three month workmanship warranty backs all services.

We complete comprehensive testing of any pump repaired in our workshop along with reporting, images and quality checks in our Factory Acceptance Test Process.



### CONTACT OUR SERVICE DEPARTMENT:

- ☎ 1300 255 786
- ✉ [service@allpumps.com.au](mailto:service@allpumps.com.au)
- 🌐 [allpumps.com.au](http://allpumps.com.au)

# REPAIR FORM EXAMPLES



All Pumps Sales & Service  
100 Silverwater Road, Silverwater, NSW, 2128  
sales@allpumps.com.au  
www.allpumps.com.au  
1300 255 786

REPAIR ASSESSMENT - 02077

17th Mar, 2023

## CUSTOMER INFORMATION

Date	17 Mar 2023
TYPE OF ASSESSMENT	REPAIR
COMPANY	Cobar management
CONTACT	Scott Robinson
CONTACT NUMBER	0268365376
SALESMAN	Oscar
REPORTED FAULTS	Quote for repair

## PUMP

PUMP MAKE	Abaque HD40
PUMP MODEL	HD40-CEG2.2T4P

## MOTOR / DRIVE

MOTOR MAKE	Ax Alloy
MOTOR TYPE	3 PHASE 415V
MOTOR SIZE__KW	2.2
MOTOR SPEED__RPM	1450

## ASSESSMENT RESULT



## TECHNICIANS COMMENTS

Motor was mega tested, good readings all round. Attempted to run test but was not turning. No glycerin was found however product was found in the housing. Product in housing caused wheel to seize up. Product was cleaned out eventually showing shoes to be heavily worn. Hose was removed and revealed a split on the hose. Hoses require new o-ring seals for the seating areas. Bearing and lip seal are worn. Gearbox was found not to have a breather, breather is required. Gearbox oil was checked, correct amount of oil is present and is still in good condition. Motor bearings were good at the time of assessment. Taper lock is still good, a clean up is required however.

## PARTS REQUIRED

1x lip seal 45 55 7  
1x shaft sleeve  
1x front cover o-ring  
1x set of shoes  
1x hose to suit pump  
1x set of hose o-rings  
1x breather for gearbox  
1x bottle with the required amount of glycerin suited for pump  
Clean, prep and test.

## PHOTOS



ESTIMATED LABOUR__HOURS	8
TECHNICIAN	Andrew



## MAINTENANCE SERVICES IN OUR WORKSHOP

# WE'RE HERE TO KEEP YOU PUMPING.

All-Pumps have dedicated workshops nationally to facilitate all types of pump maintenance and rebuilds. Our purpose built workshops backed by 50 years of experience enable us to complete in-house pump maintenance, rebuilds and new systems reliably and effectively regardless of brand or size.

You can rest assured that your pump will be restored to like new condition and any modifications are carried out in accordance with Manufacturer recommendations and the All Pumps Quality Assurance Accreditation.

We pride ourselves on quick turnaround to minimise the disruption and cost associated with asset downtime. Our team of qualified and competent tradespeople can diagnose issues and make recommendations for reduced operational costs, increased reliability and optimal system configuration.

Every pump that we repair is hydrostatically tested prior to being returned to site. This is documented in a Factory Acceptance Test to satisfy all standard quality checks.



## WHAT WE OFFER:

- ✓ **Detailed Reports** Clear images with recommendations for improvement.
- ✓ **Failure Troubleshooting** Identify and resolve root causes.
- ✓ **Seal Upgrades** Enhanced materials and design for better performance.
- ✓ **Tolerance Resetting** Restoring components to original factory standards and balance.
- ✓ **Full Pump Overhauls** Complete replacement and refurbishment of parts.
- ✓ **Genuine OEM Parts** Authentic components used for repairs.
- ✓ **Experienced Team** Over 200 years of combined expertise.
- ✓ **Factory Acceptance Testing** Comprehensive tests and reports for all repairs.
- ✓ **Warranty** Three-month coverage on all services.
- ✓ **Protective Coatings** Optional coatings for added durability.
- ✓ **Laser Alignment** Precision laser alignment on all builds and repairs
- ✓ **Vibration Analysis** We can conduct onsite vibration analysis to help prevent sudden failures

## ON-SITE COMMISSIONING & INSTALLATION SUPPORT

We understand the importance of the correct installation of pumps and related equipment and that's why we offer our on-site installation and commissioning service.

You can be assured that the system that we designed and fabricated to your unique requirements will be installed in accordance with original specifications. This includes attention to detail and the utilization of laser alignment to ensure highest accuracy.

All-Pumps delivers the same quality of workmanship at your facility as in our own which has put us at the pinnacle of the pump service industry.

## OUR MOBILE PROFESSIONALS GET IN AND ALWAYS GET IT RIGHT.



### OUR ON-SITE SERVICES INCLUDE:

- ✓ Pump and related equipment transport and delivery
- ✓ Equipment installation and commissioning
- ✓ Pump and motor/gearbox alignment
- ✓ Laser alignment
- ✓ Vibration analysis
- ✓ Flow testing
- ✓ Pressure testing
- ✓ Operational training

## LASER ALIGNMENT & INSPECTION

Shaft misalignment is one of the top causes of failure in rotating machinery and can account for up to 50% of failures.

When shafts are misaligned, unnecessary strain is placed on a piece of equipment and can cause premature wear and tear leading to early or unexpected failure. Keeping machinery precisely aligned can extend the life of the equipment and keep operating costs low.

There are five types of shaft misalignment. These are:

- Parallel misalignment
- Vertical angle misalignment
- Horizontal angle misalignment
- Combined vertical angle and offset
- Combined horizontal angle and offset

All-Pumps has the knowledge, expertise and correct equipment to make assessments and adjustments to alignment, thus reducing breakdowns, production losses, high energy consumption, overheating and excessive vibration.

To keep your operations running optimally, it's important to check the alignment on a regular basis, not just during installation.

The correction of shaft misalignment is not always viable without the correct tools, and All-Pumps uses laser alignment as part of their toolkit to achieve the highest accuracy.

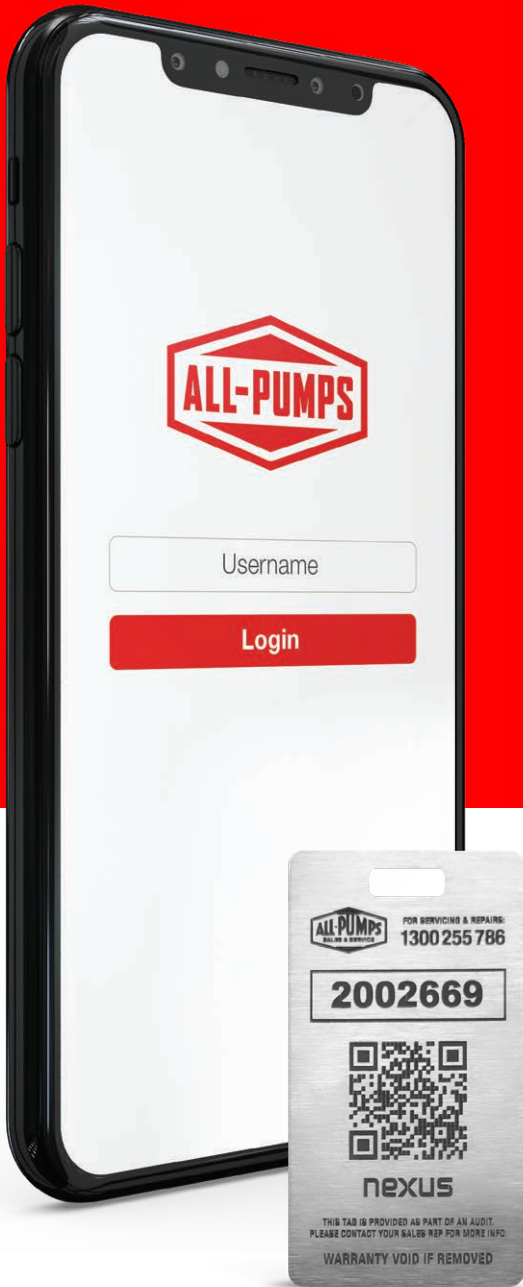
A detailed laser alignment report is provided for your reference on completion.

## REDUCE YOUR OPEX INSTALL IT RIGHT THE FIRST TIME.



# THE ALL-PUMPS APP

Are you having a hard time identifying and monitoring all the pumps you have on the site? Or are you sending the wrong people to check on your valuable assets?



## WHY USE THE ALL-PUMPS APP?

- ✓ Remotely register your pumps
- ✓ Standardise pumps on the site
- ✓ Easy identification of pumps
- ✓ Reduce system downtime
- ✓ Reminders for preventive maintenance



Easily identify poor-performing pumps



Quickly pinpoint pump locations with high failure rates



Understand and address common causes of pump failure



Identify process-critical pumps and spares



Standardise pumps performing similar duties to reduce spares needed



Find manuals and spares quickly to reduce downtime



# AIR-OPERATED DIAPHRAGM PUMPS

 **GRACO**

---

## HARD ROCK MINING PUMPS

- Most reliable air valve on the market
- Fewest parts and lowest repair cost
- Lowest cost of ownership
- In stock with or without roll frame
- Abrasive and oil-resistant diaphragms

**BUILT WITH  
GEOLAST®**  
Abrasive & Oil  
Resistant  
Diaphragms



---

## COAL MINING PUMPS

- Modular lube-free air valve for higher efficiencies
- Unique top inlet and bottom discharge orientation
- Easy and quick air valve replacement
- Lower air consumption and noise levels
- Largest chemical compatibilities
- Beaded gasket allows better containment and faster installation

**PowerFlo**

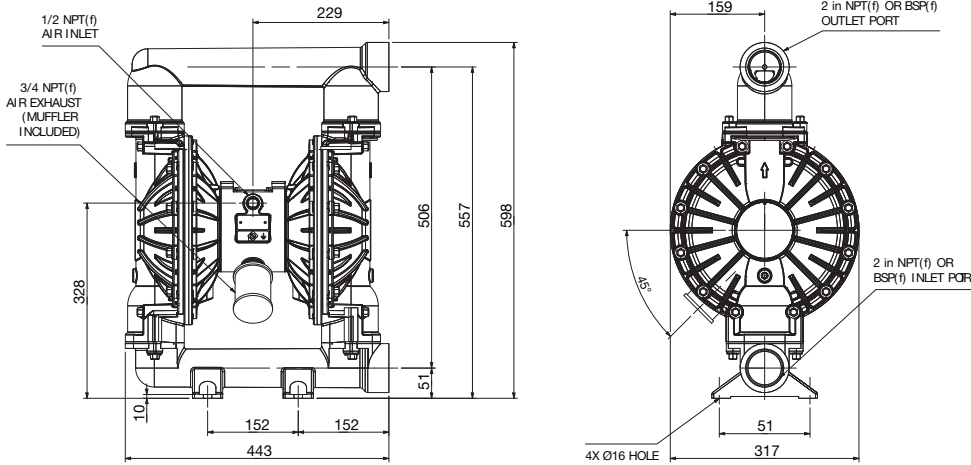


# HUSKY 2150 – BALL VALVE



## AIR OPERATED DOUBLE DIAPHRAGM PUMP HARD ROCK DEWATERING

### DIMENSIONS

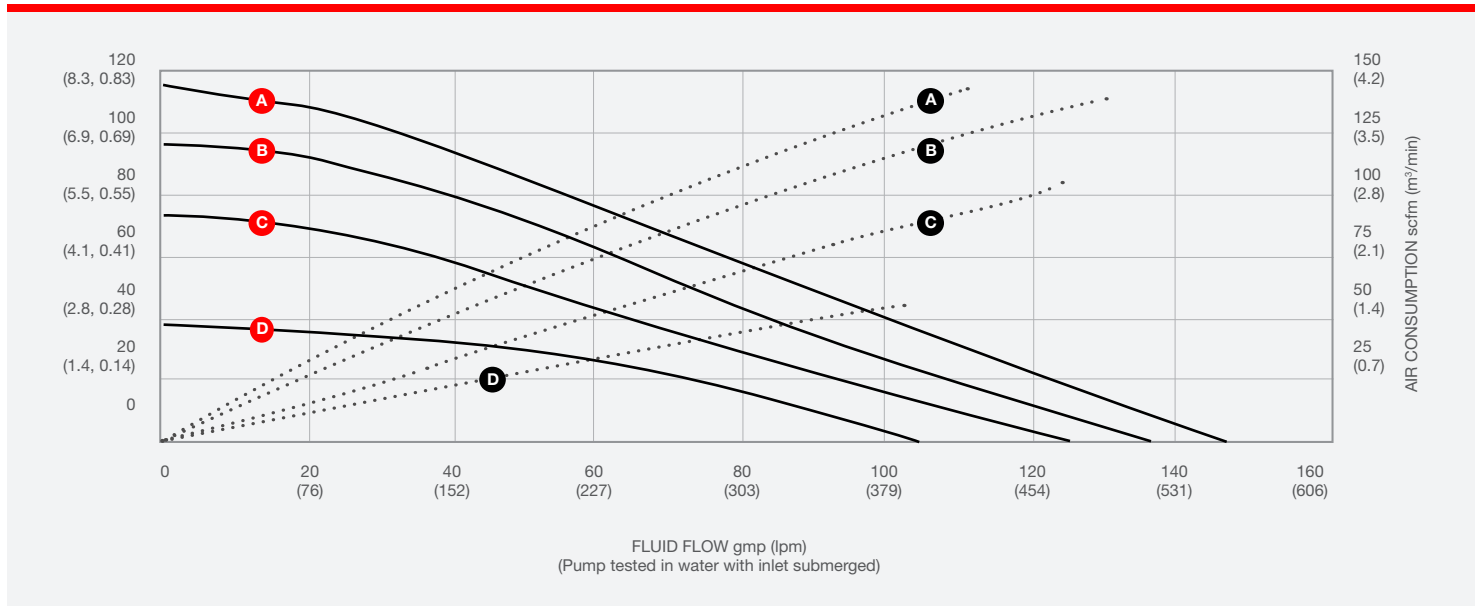


### ACCESSORIES

- Roll Cage
- Suction Strainer



### PERFORMANCE CURVES



### AIR PRESSURE

A	40 psi air (2.8 bar, 0.28 MPa)
B	70 psi air (4.8 bar, 0.47 MPa)
C	100 psi air (7 bar, 0.7 MPa)
D	120 psi air (8.62 bar, 0.86 MPa)

### LEGEND

Air Consumption	—
Fluid Flow	.....

# HUSKY 2150 – BALL VALVE

## AIR OPERATED DOUBLE DIAPHRAGM PUMP HARD ROCK DEWATERING

GRACO Husky series is a complete family of metallic and non-metallic air-operated double diaphragm pumps.

These pumps have a strong presence in many industries worldwide since they have numerous selections that make it possible for industry owners to choose the perfect fit for their facilities. All pumps boast a heavy-duty design that offers long life, increased productivity, and lower overall cost of ownership.



## FEATURES & BENEFITS

- 2" BSP threaded inlet/outlet
- 2" Male camlocks
- Up to five times longer diaphragm life
- Rugged construction, high corrosion and abrasion resistance
- Up to 30% more efficient than other AOD pumps
- Modular air valve for stall-free, low pulsation pumping

## APPLICATIONS

- ✓ General chemical and highly corrosive chemical transfer
- ✓ Abrasive fluids handling including wastewater
- ✓ Medium viscosity fluids
- ✓ Drum and tote unloading
- ✓ Paints handling
- ✓ Oil and lubricant transfer

## SPECIFICATIONS

MAX. FLUID WORKING PRESSURE	8.27 bar (0.83 MPa-120 psi)
MAX. FREE FLOW DELIVERY	568 l/min (150 gpm)
MAX. PUMP SPEED	145 cpm
DISPLACEMENT PER CYCLE	3.79 litre (1 gallon)
MAX. SUCTION LIFT	6.1 m dry, 9.14 m wet
MAX. SIZE PUMPABLE SOLIDS	6.3 mm
MAX. DIAPHRAGM OPERATING TEMP - GEOLAST	-40°C to 82°C
TYPICAL SOUND LEVEL @4.9 (0.49 MPS - 70PSI) AIR @ 125CPM	90 dBa
MAX. AIR CONSUMPTION	4.95m <sup>3</sup> /min (175 scfm)
AIR PRESSURE OPERATING RANGE	1.4 to 8.4 bar
AIR INLET SIZE	1/2 NPT (f)
FLUID INLET & OUTLET SIZE	2 – 11 in. BSPT (f)
WEIGHT	34.47 kg (76 lb)

# HUSKY 2150 LP – FLAP VALVE



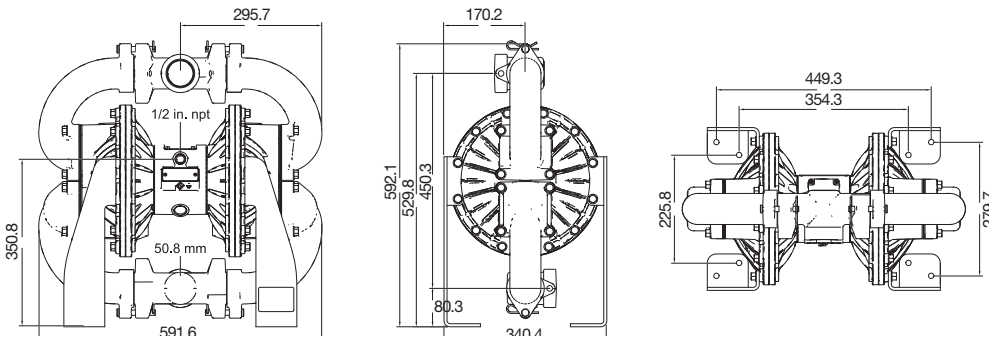
## AIR OPERATED DOUBLE DIAPHRAGM PUMP HARD ROCK DEWATERING



**INCREASED  
RELIABILITY**

**CAN PASS UP  
TO 50MM SOLIDS!**

### DIMENSIONS

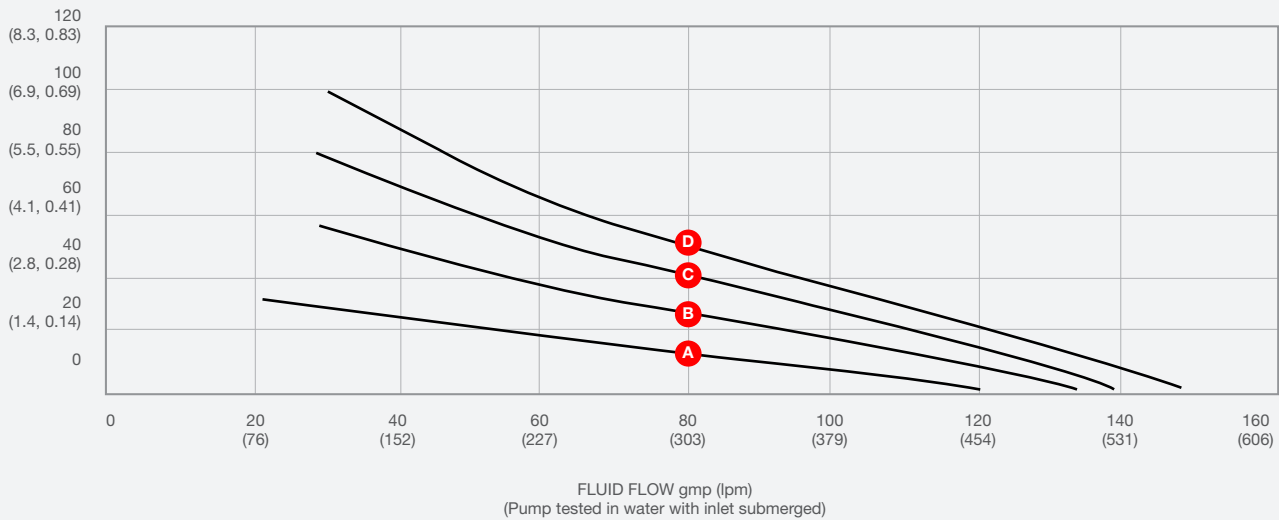


### ACCESSORIES

- Roll Cage
- Suction Strainer



### PERFORMANCE CURVES



### AIR PRESSURE

A	40 psi air (2.8 bar, 0.28 MPa)
B	70 psi air (4.8 bar, 0.47 MPa)
C	100 psi air (7 bar, 0.7 MPa)
D	120 psi air (8.62 bar, 0.86 MPa)

### LEGEND

Air Consumption	—
-----------------	---



# HUSKY 2150 LP – FLAP VALVE

## AIR OPERATED DOUBLE DIAPHRAGM PUMP HARD ROCK DEWATERING

Graco introduces its heavier-duty and more durable AOD pump for transporting a wide range of fluids containing solids – the Husky 2150 LP pump.

The Husky 2150 LP aluminium pumps are known as solids handling pumps because of their sizable 2 inch (50.8mm) NPT and BSPT inlet port. In addition, these pumps come with a powder coated finish. Flapper and diaphragm are made of high quality materials such as Buna-N, making them 5 times longer lasting than other pumps.



## FEATURES & BENEFITS

- Patented closed center air valve
- Large internal clearance for smooth flow of solids
- Diaphragm with good flex life and abrasion resistance
- Easy to replace external air valve without pump disassembly
- Self-priming for faster startup and longer pumping
- Ability to run dry without damage

## APPLICATIONS

- ✓ Mining
- ✓ Wastewater treatment plants
- ✓ Drum transfer
- ✓ Unloading fluids
- ✓ Chemical evacuation
- ✓ Ceramic glaze supply
- ✓ Dewatering and sump evacuation
- ✓ Tank and sump drainage
- ✓ Filter press
- ✓ Tank stripping
- ✓ Bilge pumping
- ✓ Oil transfer and oil skimming
- ✓ Chemical platings

## SPECIFICATIONS

MAX. FLUID WORKING PRESSURE	8.4 bar (0.84 MPa-120 psi)
MAX. FREE FLOW DELIVERY	568 l/min (150 gpm)
MAX. PUMP SPEED	145 cpm
DISPLACEMENT PER CYCLE	3.90 litre (1.03 gallon)
MAX. SUCTION LIFT	6.1 m (20 ft) dry
MAX. SIZE PUMPABLE SOLIDS	6.3mm
MAX. DIAPHRAGM OPERATING TEMP - GEOLAST	65.5°C (150°F)
TYPICAL SOUND LEVEL @4.9 (0.49 MPS - 70PSI) AIR @ 125CPM	78 dBa
MAX. AIR CONSUMPTION	4.9m <sup>3</sup> /min (175 scfm)
AIR PRESSURE OPERATING RANGE	1.4 to 8.4 bar
AIR INLET SIZE	1/2 NPT (f)
FLUID INLET & OUTLET SIZE	2 NPT (f) or BSPT (f)
WEIGHT	26.3 kg (58 lb)

# 2" ALUMINIUM – FLAP VALVE PUMP

## HARD ROCK MINING PUMPS

PowerFlo Aluminium Air-Operated Double Diaphragm Pumps are versatile workhorses designed to pump slurries and water from underground environments.

Using a lube-free air valve and comparables per stroke, these pumps use less air than competition. They are easy to maintain with fewer moving parts. PowerFlo AODD pumps will pass up to 47mm solids. Simple and proven solutions keep your project moving forward.



**INCREASED RELIABILITY** | **CAN PASS UP TO 47MM SOLIDS!**

## FEATURES & BENEFITS

- Simplest air valve on the market to maintain
- Passes solids of up to 47mm
- Flexible, resilient, long-life, abrasion-resistant
- Reliable sealing, easy installation
- Made from glass-filled engineered plastic
- Pump shape reduces slurry particle build-up
- Run dry safe

## SPECIFICATIONS

NET WEIGHT	42.3 kg
MAX FLOW	620 lpm
AIR INLET	13 mm
FLUID INLET / FLUID OUTLET	51 mm
SUCTION LIFT	6.6 m (dry), 8.3 (wet)
MAXIMUM PARTICLE SIZE	6.4
WETTED MATERIAL	Ploypropylene/PVDF
DIAPHRAGMS	Hytrell
BALL VALVE	Neoprene
SEATS	Polypropylene
VALVE SEAT O-RING	Neoprene

## OPTIONS



ROLL FRAME FITTINGS KIT

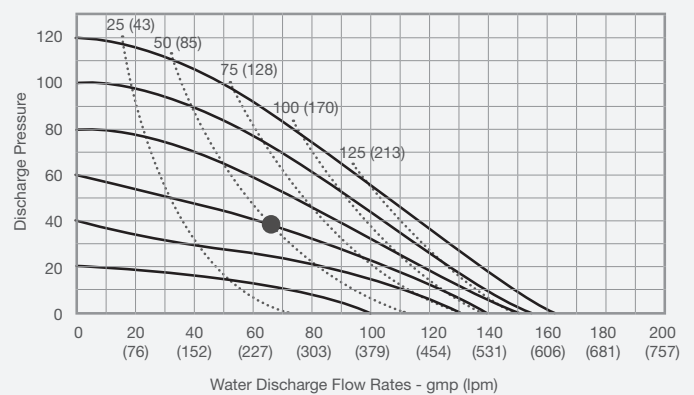


SPARE DIAPHRAGM



SPARE FLAP VALVE

## PERFORMANCE CURVES



**LEGEND:**

Air Consumption ———

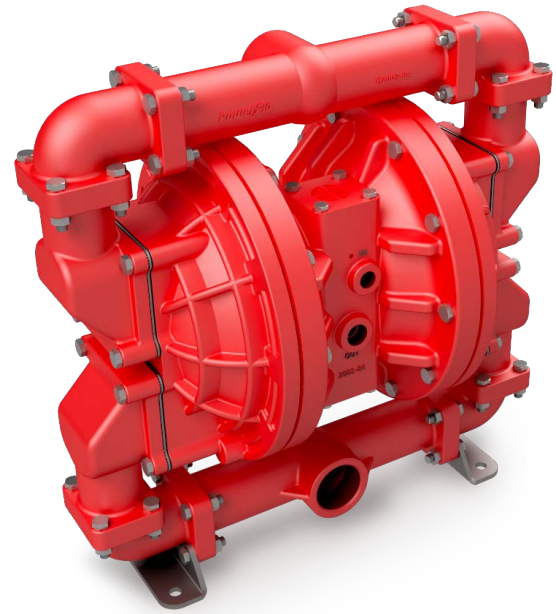
Fluid Flow ..... (dotted line)

# 2" POLYPROPYLENE — FLAP VALVE PUMP

## COAL MINING PUMPS

PowerFlo Polypropylene Air-Operated Double Diaphragm Pumps are versatile workhorses designed to pump slurries and water from underground environments.

Using a lube-free air valve and great displacement per stroke, these pumps use less air than competition. They are easy to maintain with fewer moving parts. PowerFlo AODD pumps will pass up to 50mm solids. Simple and proven solutions keep your project moving forward.



- UNDERGROUND COAL MINING SAFE
- 50MM SOLIDS

## FEATURES & BENEFITS

- Simplest air valve on the market to maintain
- Passes solids of up to 50mm
- Flexible, resilient, long-life, abrasion-resistant
- Reliable sealing, easy installation
- Made from glass-filled engineered plastic
- Pump shape reduces slurry particle build-up
- Run dry safe

## SPECIFICATIONS

NET WEIGHT	32 kg
MAX FLOW	625 lpm
AIR INLET	13 mm
FLUID INLET	51 mm
FLUID OUTLET	51 mm
SUCTION LIFT	7.62 m
MAXIMUM PARTICLE SIZE	50 mm
WETTED MATERIAL	Polypropylene
DIAPHRAGMS	Santoprene
FLAPS	Nitrile
SEALS	Nitrile
FASTENERS	Stainless steel

## OPTIONS



ROLL FRAME FITTINGS KIT

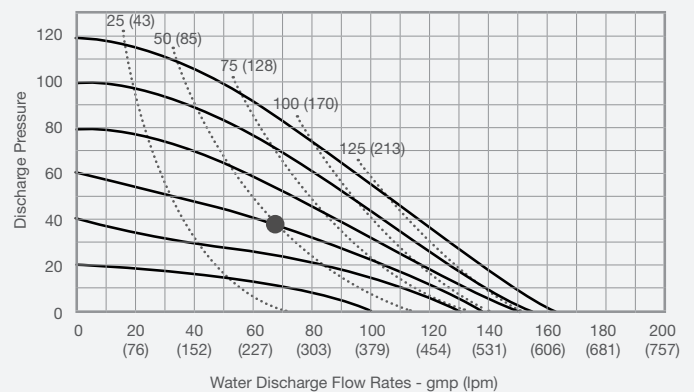


SPARE DIAPHRAGM



SPARE FLAP VALVE

## PERFORMANCE CURVES



### LEGEND:

Air Consumption —————

Fluid Flow ..... (dotted line)

# 2" POLYPROPYLENE – BALL VALVE PUMP

## COAL MINING PUMPS

This range of air operated pumps don't have an electrical motor which makes them ideal for environments where there isn't any electricity as well as in explosive, flammable and hazardous areas.

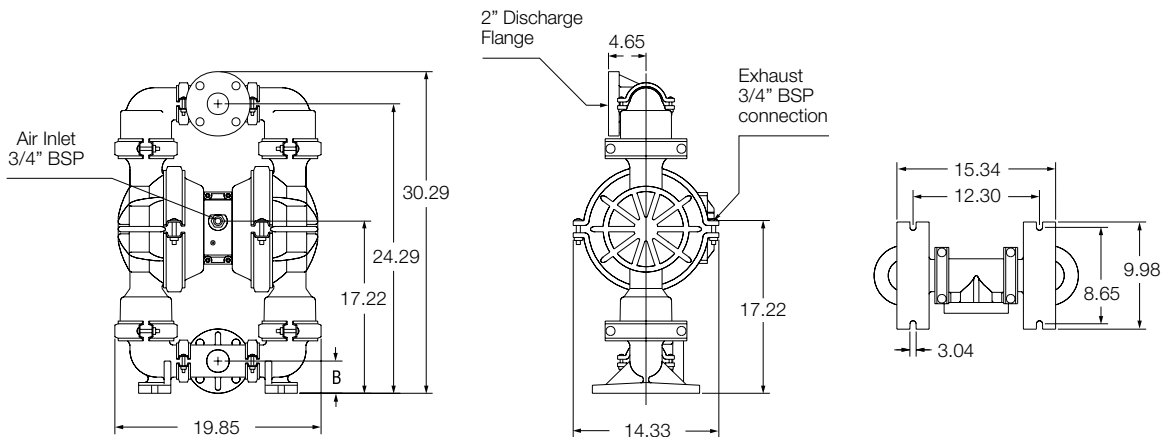
Well suited for transferring highly abrasive, semi-solid and shear sensitive materials making them a prominent choice for use in mining and chemical industries.

## FEATURES & BENEFITS

- Self priming ability
- Variable flow
- Seal-less design
- Minimal downtime for air valve maintenance without disassembly
- Run dry capability without causing damage



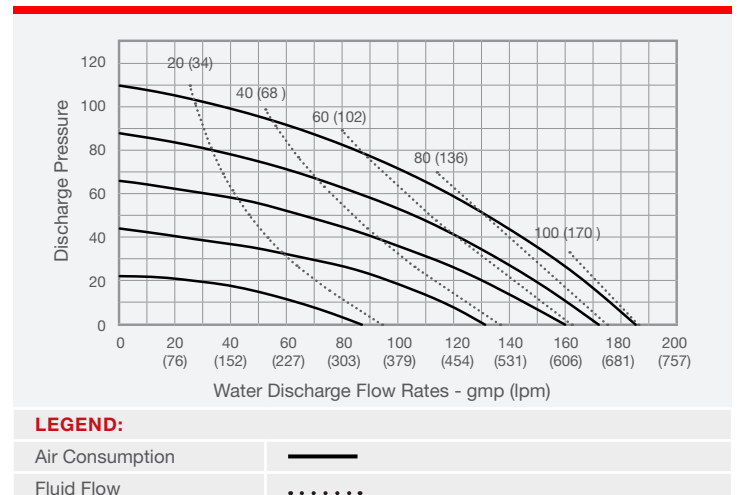
## DIMENSIONS



## SPECIFICATIONS

NET WEIGHT	42.3 kg
MAX FLOW RATE	620 lpm (164 gpm)
MAX AIR PRESSURE	100 psi (6.9 bar)
AIR INLET	13 mm (1/2" BSP)
PORT INLET	51 mm (2" BSP)
DISCHARGE	51 mm (2" BSP)
SUCTION LIFT	6.6 m (Dry), 8.3 m (Wet)
MAX PARTICLE SIZE (DIA)	6.4 mm (1/4")
AIR EXHAUST	(3/4" BSP)

## PERFORMANCE CURVES



# 4" CAST IRON – BALL VALVE

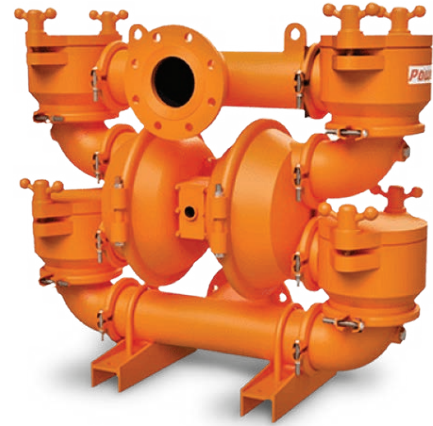
## COAL MINING PUMPS

These pumps are easy to maintain, cost effective, and economical. Portable and available in a single-point exhaust option for submersible applications.

This product excels in applications such as transfer of water, slurry and more.

## FEATURES & BENEFITS

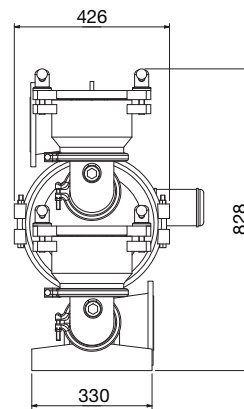
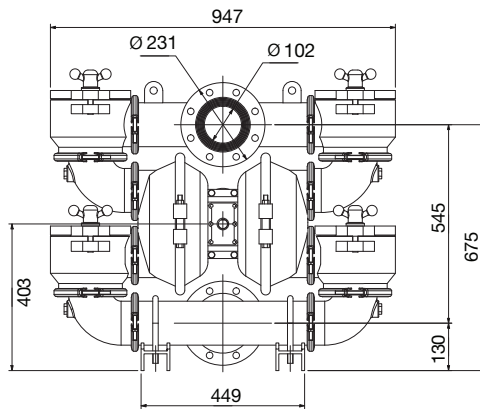
- Simple air distribution system design, minimal moving parts
- Clamped design for lightweight and quick maintenance
- Ability to handle dirty air applications
- Single-point exhaust
- Cast iron construction



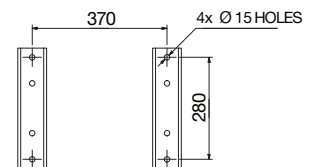
**INCREASED RELIABILITY**

**HIGH VOLUME DEWATERING**

## DIMENSIONS



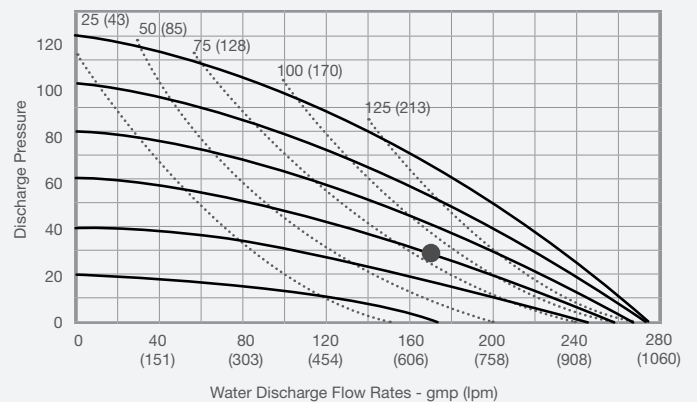
### MOUNTING HOLES LAYOUT



## SPECIFICATIONS

AIR INLET	19mm (3/4")
LIQUID INLET & DISCHARGE	102mm (4")
MAX. SUCTION LIFT CAPACITY	Rubber: – 3.66m (12") dry Rubber: – 9.14m (30") wet
DISPLACEMENT PER STROKE	Rubber – 4.62L (1.22gal)
MAX. FLOW RATE	Rubber – 1041 lpm (275gpm)
MAX. SOLIDS SIZE	35mm (1 3/4")
WETTED HOUSINGS	Material – Cast Iron Material – 231kg (500lb)
NON-WETTED HOUSINGS	Centre Block – Polypropylene Air Valve – Brass Air Chamber – Cast Iron

## PERFORMANCE CURVES



### LEGEND:

Air Consumption



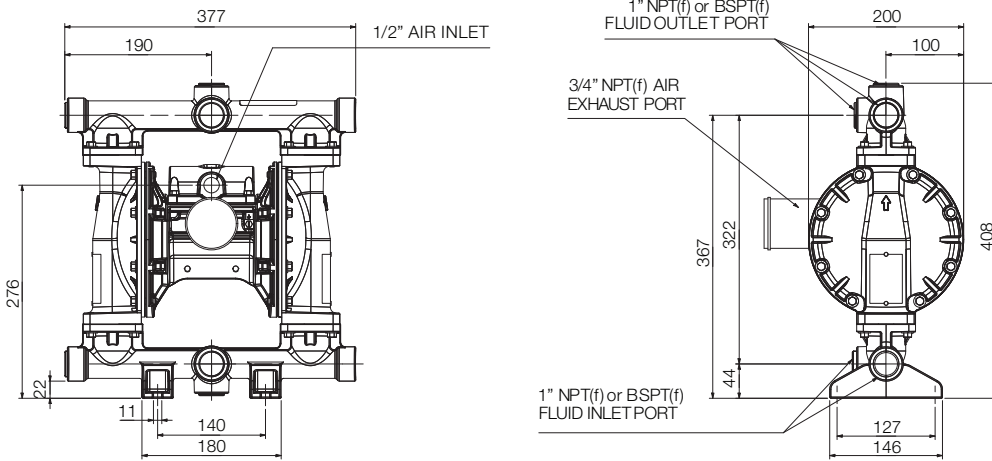
Fluid Flow



# HUSKY 1050 ALUMINIUM — LUBE OIL PUMP

## MINE SERVICE PUMPS

### DIMENSIONS

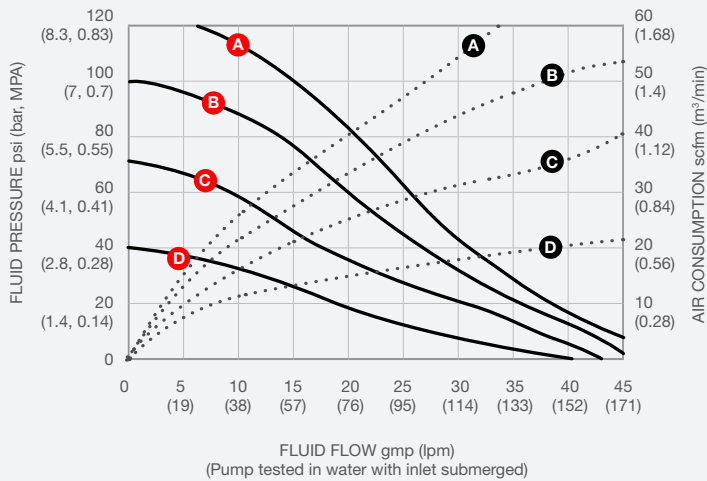


### ACCESSORIES

— Roll Cage



### PERFORMANCE CURVES



### AIR PRESSURE

A	7 bar (0.7 MPa - 100 psi)
B	4.8 bar (0.48 MPa - 70 psi)
C	2.8 bar (0.28 MPa - 40 psi)
D	1.4 bar (0.14 MPa - 20 psi)

#### Legend

Air Consumption ———

Fluid Flow ·····

# HUSKY 1050 ALUMINIUM — LUBE OIL PUMP

## MINE SERVICE PUMPS

Graco Husky 1050 air-operated double diaphragm pumps have 1-inch (25.4 mm) porting connections and feature a stall-free, low-pulsation air valve for smooth, rapid changeover and minimised downtime.

The pumps also come with a one-piece centre section, eliminating leaks and reducing maintenance compared to other diaphragm pumps. Husky 1050 is available in aluminum, polypropylene, conductive polypropylene, PVDF, stainless steel and Hastelloy construction to cover a wider variety of working fluids.



## FEATURES & BENEFITS

- Up to 5 times longer diaphragm life compared to other AODDs in its class
- Bolted design provides even sealing pressure for leak-free operation
- 30% more efficient than other AODDs
- Spring-loaded, externally serviceable pilot valves for faster changeover

## APPLICATIONS

- ✓ Anti-freeze
- ✓ Detergent
- ✓ Resin
- ✓ Polymer
- ✓ Motor Oil
- ✓ Gear Oil
- ✓ Hydraulic Fluid
- ✓ Automatic Transmission Fluid
- ✓ Cutting Oil
- ✓ Water - Wastewater Treatment
- ✓ Ink and Colorant

## SPECIFICATIONS

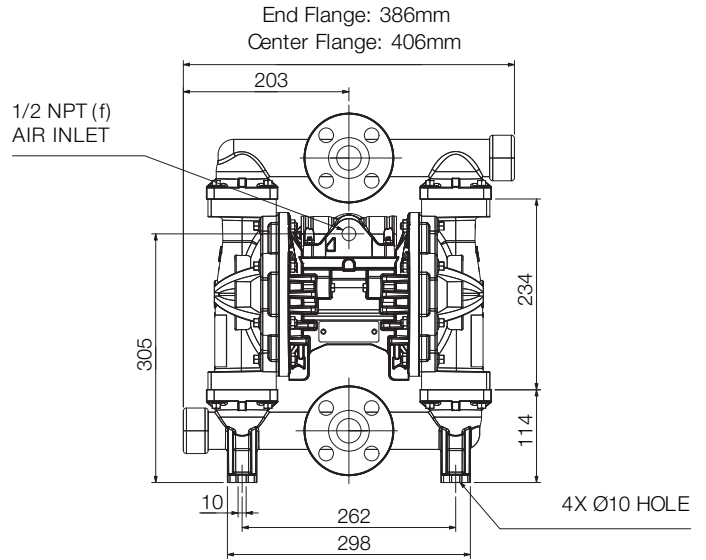
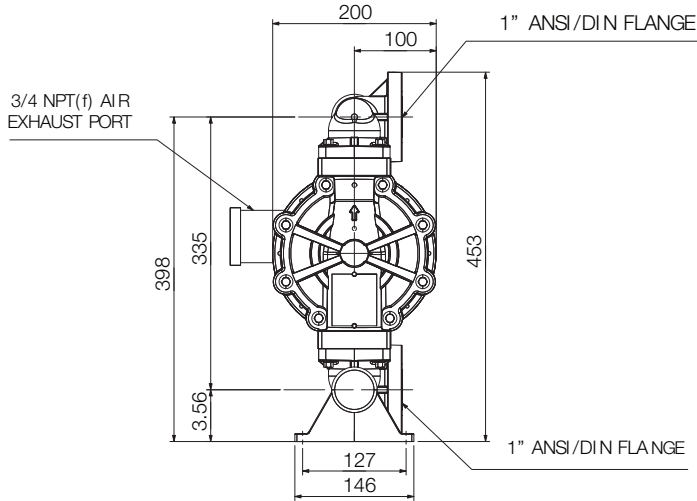
Max. Fluid Working Pressure	8.6 bar (0.86 MPa - 125 psi)
Max. Free Flow Delivery	189 l/min (50 gpm)
Max. Pump Speed	280 cpm
Displacement Per Cycle	0.64 liters (0.17 gal)
Max. Suction Lift	4.9m (16 ft.) dry, 8.8m (29 ft.) wet
Max. Size Pumpable Solids	3.2 mm (1/8 in)
Sound Power	
— @ 4.8 bar (0.48 MPa - 70psi) and 50 cpm	78 dBa
— @ 7.0 bar (0.7 MPa - 100psi) and full flow	90 dBa
Sound Pressure	
— @ 4.8 bar (0.48 MPa - 70psi) and 50 cpm	84 dBa
— @ 7.0 bar (0.7 MPa - 100psi) and full flow	96 dBa
Typical Sound Level	
— @ 4.9 (0.49 MPa - 70psi) air @ 125 cpm	74 dBa
Max. Air Consumption	67 scfm
Air Consumption	
— @ 4.8 bar (0.48 MPa - 70psi) / 76 L/min	25 scfm
Air Pressure Operating Range	1.4 - 8.6 bar (0.14 - 0.86 MPa/ 20-125 psi)
Air Inlet Size	1/2 NPT (f)
Fluid Inlet Size	1 in. NPT (f) OR 1 in. BSPT
Fluid Outlet Size	1 in. NPT (f) OR 1 in. BSPT
Weight	10.5 kg (23 lb)

# HUSKY 1050 POLYPROPYLENE AODD



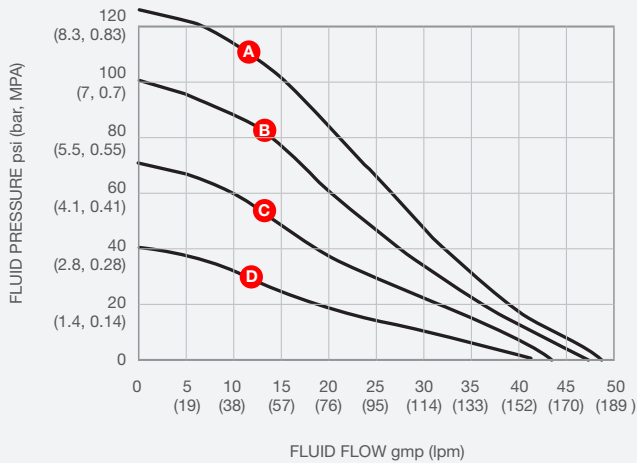
## MINE SERVICE PUMPS

### DIMENSIONS

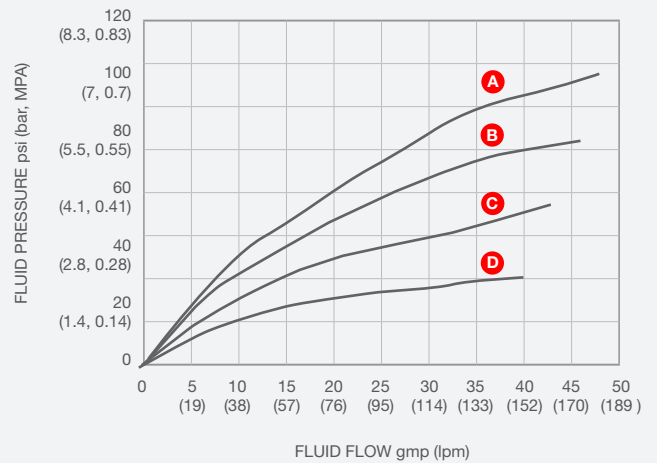


### PERFORMANCE CURVES

**FLUID PRESSURE CYCLE RATE**



**AIR CONSUMPTION CYCLE RATE**



#### OPERATING PRESSURE

A	7 bar (0.7 MPa - 100 psi)
B	4.8 bar (0.48 MPa - 70 psi)
C	2.8 bar (0.28 MPa - 40 psi)
D	1.4 bar (0.14 MPa - 20 psi)



# HUSKY 1050 POLYPROPYLENE AOOD



## MINE SERVICE PUMPS

Graco Husky 1050 air-operated double diaphragm pumps have 1-inch (25.4 mm) porting connections and feature a stall-free, low-pulsation air valve for smooth, rapid changeover and minimised downtime.

The pumps also come with a one-piece centre section, eliminating leaks and reducing maintenance compared to other diaphragm pumps. Husky 1050 is available in aluminum, polypropylene, conductive polypropylene, PVDF, stainless steel and Hastelloy construction to cover a wider variety of working fluids.



## FEATURES & BENEFITS

- Up to 5 times longer diaphragm life compared to other AOODs in its class
- Bolted design provides even sealing pressure for leak-free operation
- 30% more efficient than other AOODs
- Spring-loaded, externally serviceable pilot valves for faster changeover

## APPLICATIONS

- ✓ Anti-freeze
- ✓ Detergent
- ✓ Resin
- ✓ Polymer
- ✓ Water - Wastewater Treatment
- ✓ Ink and Colorant

## SPECIFICATIONS

Max. Fluid Working Pressure	8.6 bar (0.86 MPa - 125 psi)
Max. Free Flow Delivery	189 l/min (50 gpm)
Max. Pump Speed	280 cpm
Displacement Per Cycle	0.64 liters (0.17 gal)
Max. Suction Lift	4.9m (16 ft.) dry, 8.8m (29 ft.) wet
Max. Size Pumpable Solids	3.2 mm (1/8")
Sound Power	78 dBa — @ 4.8 bar (0.48 MPa - 70psi) and 50 cpm — @ 7.0 bar (0.7 MPa - 100psi) and full flow
Sound Pressure	84 dBa — @ 4.8 bar (0.48 MPa - 70psi) and 50 cpm — @ 7.0 bar (0.7 MPa - 100psi) and full flow
Max. Air Consumption	67 scfm
Air Consumption	25 scfm — @ 4.8 bar (0.48 MPa - 70psi) / 76 L/min
Air Pressure Operating Range	1.4 - 8.6 bar (0.14 - 0.86 MPa/ 20-125 psi)
Air Inlet Size	1/2 NPT (f)
Fluid Inlet Size	1" NPT (f) OR 1" BSPT
Fluid Outlet Size	1" NPT (f) OR 1" BSPT
Weight	10.5 kg (23 lb)

# WHY TSURUMI PUMPS OUTLAST ALL COMPETITOR PUMPS?

Simple reliable engineering for peace of mind and lowest cost of ownership.

## ANTI-WICKING CABLE ENTRY

- Prevents water intrusion due to capillary action should the cable sheath be damaged or the end of cable submerged. Also prevents moist air from infiltrating the motor housing and condensation from forming inside the housing due to temperature differences between the housing and outside air.

## CIRCULE THERMAL PROTECTOR

- Directly cuts the motor circuit if excessive heat is detected or overcurrent occurs in the motor. Restarts automatically as soon as the motor reaches normal temperature.

## BEARINGS

- Permanently lubricated, double-shielded, single row deep groove, high temperature C3 ball bearings.

## OIL LIFTER

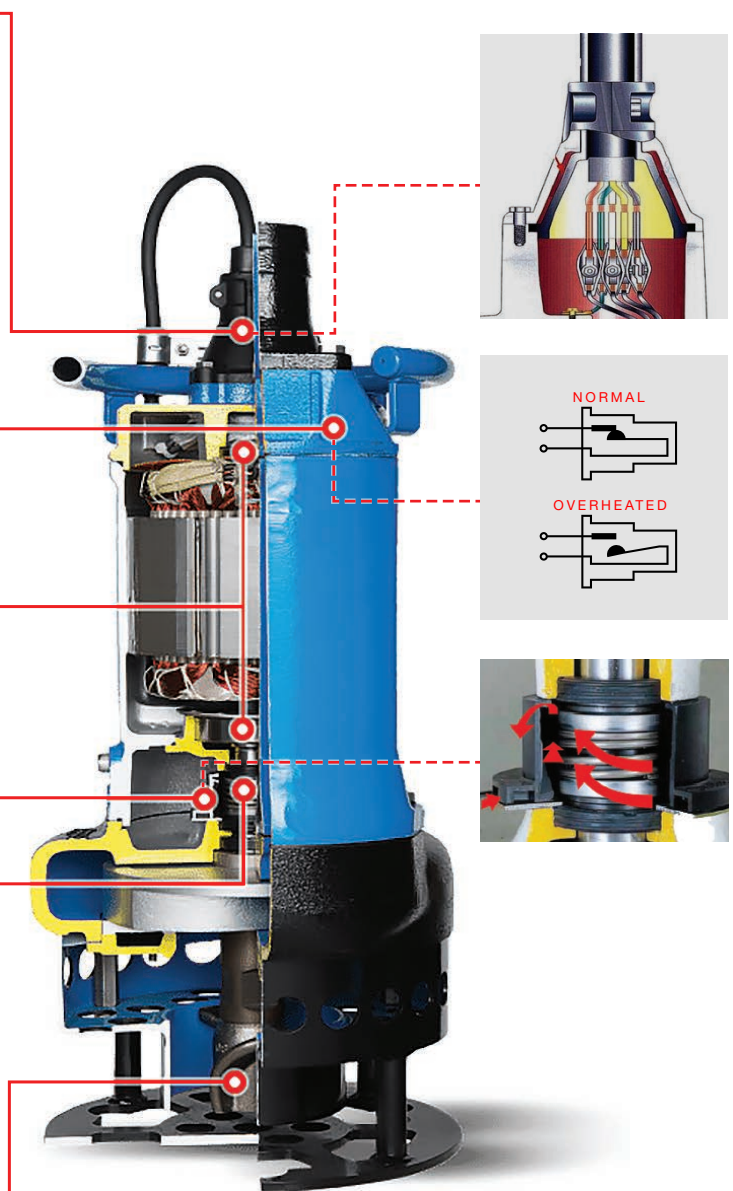
- Provides lubrication and cooling of both the seal faces down to 1/3 of normal oil level, thus maintaining a stable shaft sealing effect and prolonging seal life. The oil lifter is Tsurumi original patented design.

## DUAL SIC MECHANICAL SEAL

- Provides the longest operational life of any available seal.

## AGITATING MECHANISM

- High chrome iron / ductile iron impeller resists wear by abrasive particles.



# SUBMERSIBLE PUMPS

---

## **KTZ/KRDX SERIES** **SUBMERSIBLE** **DEWATERING PUMPS**

- Most reliable submersible pumps
- Oil lifter allows pump to dry
- Resin capable entry barrier
- Simple yet extremely durable



 **TSURUMI PUMP™**

# KTZ SERIES

## DEWATERING PUMPS FOR MINING

Tsurumi's KTZ Series of submersible dewatering pumps are designed to handle highly abrasive liquids often encountered in the most demanding conditions in construction, aggregate and mining applications.

Mining specific pumps are equipped with screened cables and the motor is incorporated with built in diodes for ground fault checks. These design inclusions satisfy necessary safety regulations.

This range of pumps are available in a range of voltages ranging from 380 – 1000V.

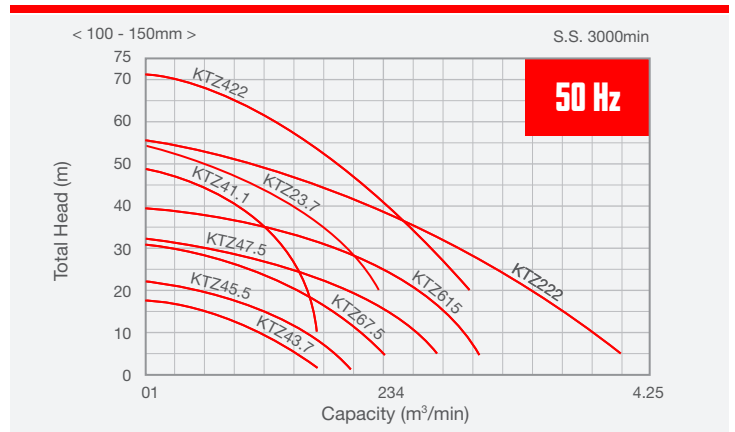
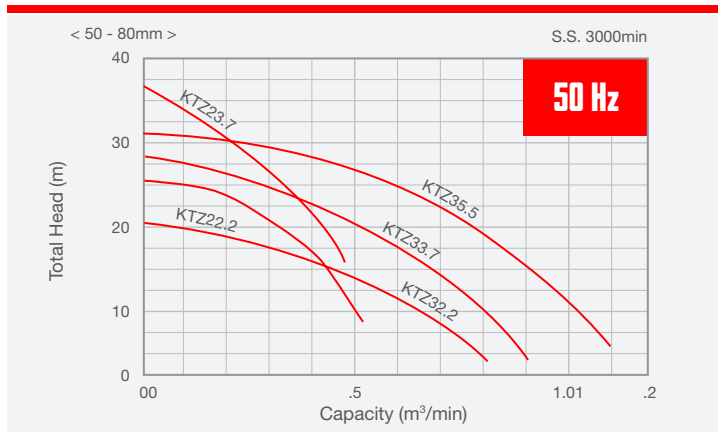


## FEATURES & BENEFITS

- High volume, extra durable pump available in variety of sizes
- High head and high head volume dewatering
- Semi-open high chrome impeller
- Easily converts between high pressure and high volume configurations
- High pressure rated mechanical seals

- Rugged iron construction
- Anti-wicking cable entry
- Dual silicon carbide mechanical seals
- Oil lifter
- Internal thermal motor protection

## PERFORMANCE CURVES



## MODEL SELECTIONS

Model	Discharge Bore (mm)	Motor Output (kW)	Starting Method	Solids Passage (mm)	Dimensions (mm)	Dry Weight (kg)	Cable Length (m)
KTZ22.2	50	2.2	D.O.L.	8.5	261 x 216 x 668	36	20
KTZ23.7	50	3.7	D.O.L.	8.5	338 x 252 x 667	62	20
KTZ32.2	80	2.2	D.O.L.	8.5	268 x 216 x 668	35	20
KTZ33.7	80	3.7	D.O.L.	8.5	353 x 252 x 677	62	20
KTZ35.5	80	5.5	D.O.L.	8.5	363 x 258 x 721	76	20
KTZ43.7	100	3.7	D.O.L.	8.5	368 x 252 x 687	62	20
KTZ45.5	100	5.5	D.O.L.	8.5	379 x 258 x 731	77	20
KTZ47.5	100	7.5	D.O.L.	12	401 x 314 x 809	104	20
KTZ411	100	11	D.O.L.	12	408 x 350 x 836	133	20
KTZ415	100	15	D.O.L.	12	408 x 350 x 906	146	20
KTZ422	100	22	D.O.L.	8.5	508 x 413 x 1172	295	20
KTZ67.5	150	7.5	D.O.L.	20	394 x 314 x 839	103	20
KTZ611	150	11	D.O.L.	20	438 x 350 x 856	133	20
KTZ615	150	15	D.O.L.	20	438 x 350 x 926	146	20
KTZ622	150	22	D.O.L.	12	539 x 413 x 1192	296	20

# GPN SERIES SLURRY PUMPS

Tsurumi GPN Series is a collection of three-phase, extra heavy duty slurry pumps. High-powered that deliver powerful agitation for discharging slurries laden with silt, earth, sand or other abrasive particles.

Incorporating a shaft mounted agitator made of abrasive resistant material enables efficient suspension of settled slurry, sand or mud through the creation of a downward current.

## FEATURES & BENEFITS

- Hardened high chrome impeller, agitator and suction plate greatly increase pump durability
- Discharge sizes from 3 – 6” and power range from 7.5 – 50kW
- 4 pole, 1400rpm / or 6 pole, 1000rpm motors
- Low impeller tip speed to prolong parts life by up to 3 times average expectancy
- Bottom side discharge up to 6” of spiral design allows smooth passage of solid materials
- Durable cast iron construction
- Dual silicon carbide mechanical seals
- Internal thermal motor protection
- Anti wicking cable entry
- Easy and inexpensive maintenance

## APPLICATIONS

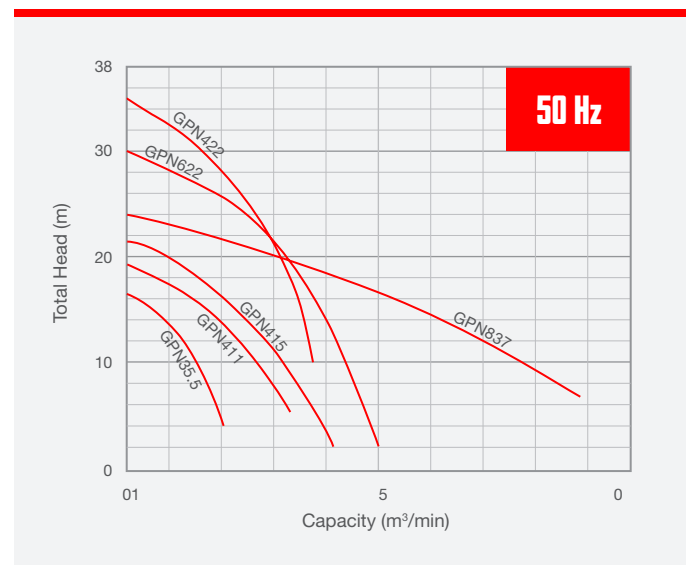
- ✔ Transferring and draining slurry in piling works
- ✔ Draining cement slurry or sand-carrying water in foundation works
- ✔ Pumping scale at steel mills
- ✔ Draining aggregate and iron ore wash water in mines and quarries
- ✔ Collecting sediments in grit chambers at waste water treatment plants
- ✔ Grit chambers
- ✔ Sludge pond cleanout

## MODEL SELECTIONS

Model	Discharge Bore (mm)	Motor Output (kW)	Starting Method	Solids Passage (mm)	Dimensions (mm)	Dry Weight (kg)	Cable Length (m)
GPN35.5	80	5.5	D.O.L.	30	487x390x841	160	8
GPN411	100	11	D.O.L.	30	617x452x924	239	8
GPN415	100	15	D.O.L.	30	617x452x924	242	10
GPN422	100	22	D.O.L.	30	725x572x1102	410	10
GPN622	150	22	D.O.L.	30	725x572x1102	415	10
GPN837	200	22	Star Delta	40	1015x749x1606	815	10



## PERFORMANCE CURVES



# LH SERIES

## HIGH HEAD DRAINAGE PUMPS

The Tsurumi LH range comprises high head submersible drainage pumps. Designed to provide increased wear resistance in demanding fluid transfer conditions predominantly found in mines and construction sites.

A slim cylindrical three-phase cast iron high head drainage pump that can be installed in a well casing for deep well dewatering.

### APPLICATIONS

- ✓ Mine, industrial wastewater and construction site drainage
- ✓ Raw water supply from water source

### FEATURES & BENEFITS

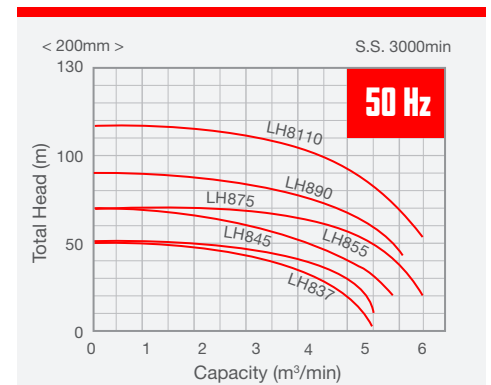
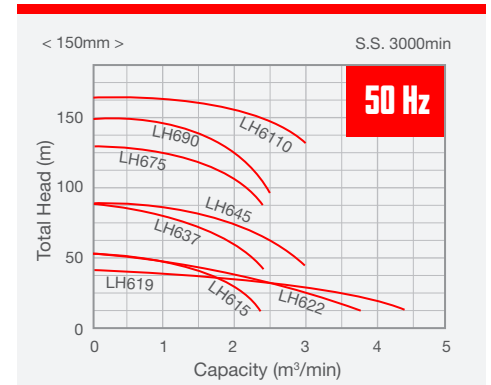
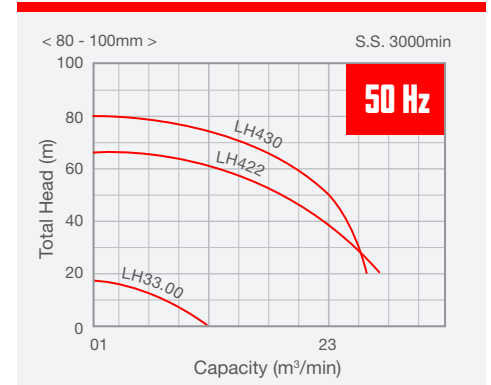
- Reliable performance in high-volume, high head applications
- Wear-resistant parts and materials for long lasting performance
- Top discharge, flow-thru design for motor cooling and extended low water level capability
- Inspection window to check on degraded insulation
- Highly efficient, continuous duty air filled, copper wound insulated motor to minimize cost of operation
- Internal thermal and amperage overload protection prevent motor failure in run-dry or surge conditions
- High pressure dual (top and bottom) silicon carbide mechanical seals operate in separate oil filled chamber and can withstand operating depths up to 100m.
- Seal pressure relief ports provide a flow path above the casing and allow water release from the pump and away from the shaft, protecting the seals from excessive pumping pressure or vibration in high head pumping applications
- Double shielded, permanently lubricated high temperature ball bearings for extended operational life
- Anti-wicking cable entry and exclusive oil lifter for extra protection

### MODEL SELECTIONS

Model	Discharge Bore (mm)	Motor Output (kW)	Starting Method	Solids Passage (mm)	Dimensions (mm)	Dry Weight (kg)	Cable Length (m)
LH33.0	80	3	D.O.L.	6	185 x 645	42	20
LH422	100	22	D.O.L.	6	420 x 1352	350	10
LH430	100	30	Star-Delta	6	420 x 1352	355	10
LH615	150	15	D.O.L.	8.5	330 x 1014	213	10
LH619	150	19	D.O.L.	12	420 x 1423	350	10
LH622	150	22	D.O.L.	12	420 x 1423	360	10
LH637	150	37	Star-Delta	6	530 x 1448	495	10
LH645	150	45	Star-Delta	6	530 x 1448	510	10
LH675	150	75	Star-Delta	8	563 x 1676	865	10
LH690	150	90	Star-Delta	10	592 x 1787	1100	20
LH6110	150	110	Star-Delta	10	616 x 1887	1210	20
LH837	200	37	Star-Delta	20	530 x 1488	495	10
LH845	200	45	Star-Delta	20	530 x 1488	510	10
LH855	200	55	Star-Delta	20	563 x 1716	820	10
LH875	200	75	Star-Delta	20	563 x 1716	865	10
LH890	200	90	Star-Delta	20	592 x 1787	1150	20
LH8110	200	110	Star-Delta	20	616 x 1887	1210	20



### PERFORMANCE CURVES



# KRDX SERIES

## COAL MINING SLURRY PUMPS

Tsurumi's KRDX Series are three phase heavy duty explosion proof submersible slurry pumps. Intended for use in hazardous environments such as coal mines, oil / gas refineries and similar worksites where dangerous combustible gases, vapours or flammable liquids are present.

Explosion proof slurry pumps that deliver powerful agitation for discharging slurries laden with silt, earth, sand or other particulate.

Premium construction of high chromium cast iron agitator that assists with the smooth suction of settled matter. Impellers and suction plates are also made of high chromium cast iron, whilst the pump casing and motor frame are ductile cast iron for superior wear resistance for the respective parts.

### FEATURES & BENEFITS

- Anti-wicking cable entry
- Internal thermal motor protection
- Ground check diode
- Dual inside mechanical seals with silicon carbide faces
- Seal pressure relief ports
- Oil seal and labyrinth ring
- IECEX (ICECEX TUR 19.0038X) and ATEX (TUV 19 ATEX 8398 X) certified
- Available in voltages ranging from 380 – 1000 V
- Designed for reliable continuous duty over extended periods whilst operating in harsh environments
- Outstanding durability and maintainability
- Top discharge, side flow assures effective motor cooling, even in conditions where motor is exposed to air

### APPLICATIONS

- ✓ Suitable for use in an explosive atmosphere
- ✓ Extreme mining, aggregate and construction environments
- ✓ Suitable for UG coal mining

### MODEL SELECTIONS

Model	Discharge Bore (mm)	Motor Output (kW)	Starting Method	Solids Passage (mm)	Dimensions (mm)	Dry Weight (kg)	Cable Length (m)
KRDX33.7	80	3.7	D.O.L.	8.5	261 x 216 x 668	155	20
KRDX45.5	100	5.5	D.O.L.	8.5	338 x 252 x 667	175	20
KRDX47.5	100	7.5	D.O.L.	8.5	268 x 216 x 668	186	20

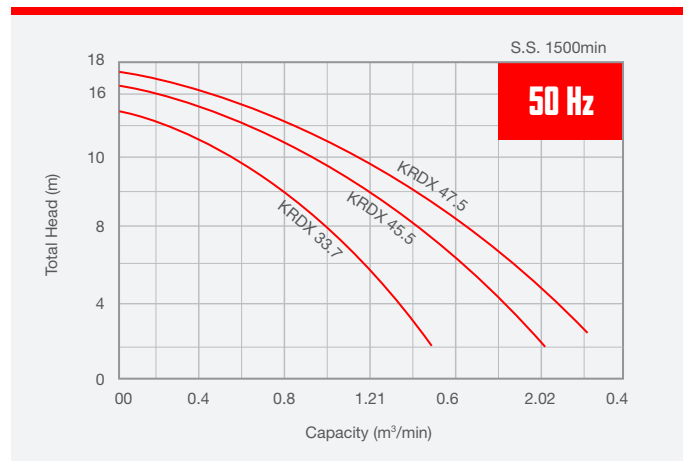


AVAILABLE IN  
**1000 VOLTS**



**SUITABLE FOR UG COAL MINING**

### PERFORMANCE CURVES



Rhino Submersible Pumps have a small cross section and can be lowered into areas having small access hatches. Especially preferred where an electric spark may risk ignition or explosion. Compact design for use in restricted areas. Will pump down to a depth of 22mm and pass solids up to 3mm in size.

### APPLICATIONS

- ✓ Construction
- ✓ Dewatering
- ✓ Engineering industry
- ✓ Transfer of fluids, usage in sumps for periodic dewatering

- ✓ Marine - emptying ballast tanks, after washing procedure
- ✓ Draining cargo holds during and after washing procedure
- ✓ Pumping of sea water from bilges, holds, etc.

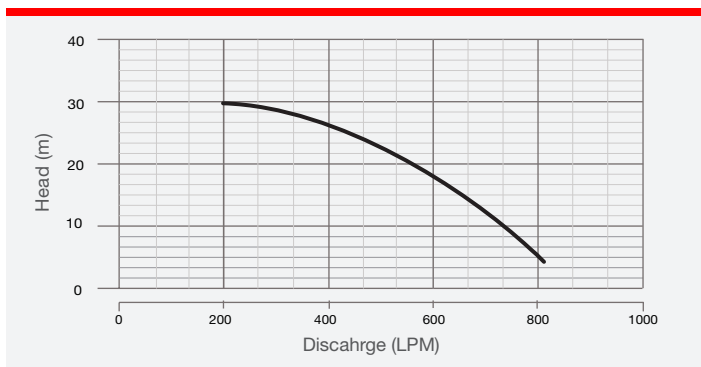
### RHINO ASP-20- 2"



### SPECIFICATIONS

Net weight	22 kg
Height	340 mm
Min. area requirement	204 mm x 230 mm
Air inlet	3/4" NPT
Air outlet	1" BSPP
Air consumption	2.7 m <sup>3</sup> /min
Recommended hose size	25 mm (1")
Fluid inlet	Screen
Fluid outlet	2" NPT
Air supply	80.90 psig
Material of construction	Cast Iron

### PERFORMANCE CURVE



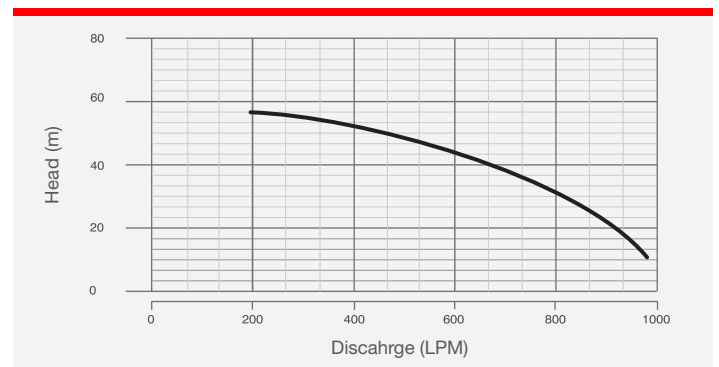
### RHINO ASP-25 – 2.5"



### SPECIFICATIONS

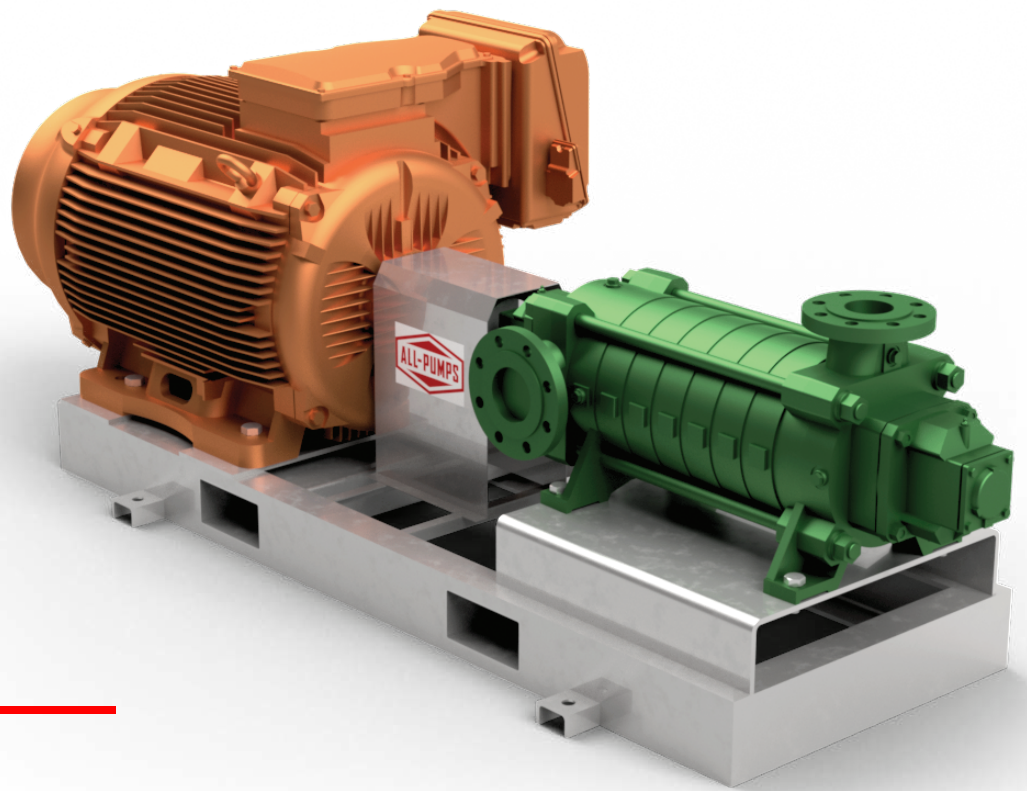
Net weight	32 kg
Height	430 mm
Min. area requirement	210 mm x 305 mm
Air inlet	3/4" NPT
Air outlet	1-1/2" BSPP
Air consumption	3.8 m <sup>3</sup> /min
Recommended hose size	25 mm (1")
Fluid inlet	Screen
Fluid outlet	2 1/2" NPT
Air supply	80.90 psig
Material of construction	Cast Iron

### PERFORMANCE CURVE





# HORIZONTAL MULTISTAGE PUMPS



---

## **NM & NMA SERIES** **HORIZONTAL** **MULTISTAGE PUMPS**

- Constructed from materials ensuring high levels of performance
- Reliability together with low life cycle costs
- High hydraulic efficiencies

**nexus**

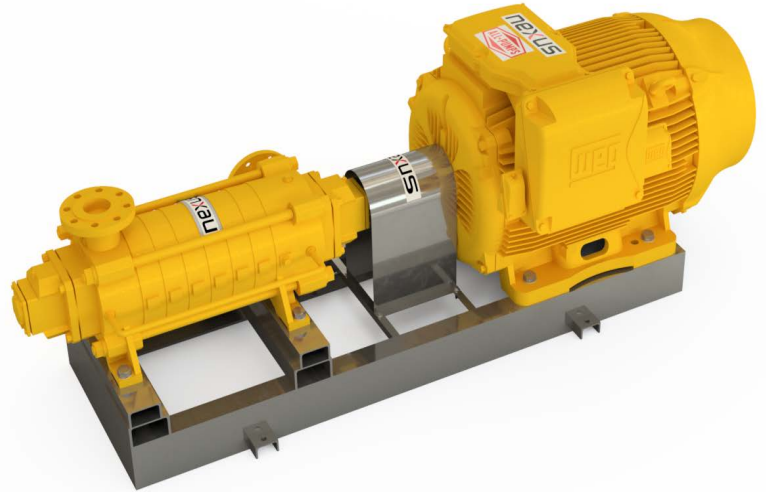
# NM & NMA SERIES

nexus

## HORIZONTAL MULTISTAGE PUMPS

Nexus boasts a powerhouse of industrial pumps that are engineered to meet the toughest fluid transfer requirements.

Trouble-free operation and effective flow rate at low voltages make these pumps cost effective.



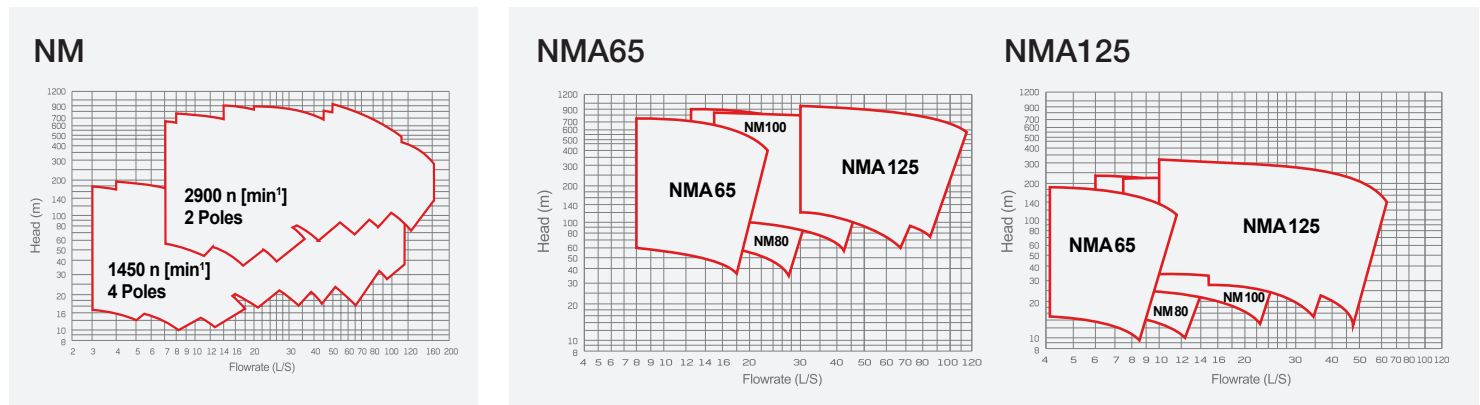
## APPLICATIONS

- ✓ Water supply
- ✓ Leisure parks
- ✓ Industrial applications
- ✓ Snowmaking
- ✓ Irrigation
- ✓ Fire-fighting

## SPECIFICATIONS

SIZES	DNm 65, DNm 80, DNm 100, & DNm 125
CAPACITY	Up to 110 L/s
PRESSURE	Up to 100 bar
SUCTION PORT	PN 40
DELIVERY PORT	PN 100
ROTATION SPEED	1.450 - 3.500 rpm
MAXIMUM OPERATING TEMPERATURE	90°C

## PERFORMANCE CURVES



# MINE DEWATERING SKIDS



---

## GHT/GSH SERIES MINE DEWATERING PUMPS

- Rapid and reliable automatic priming system
- Heavy-duty construction, made in the USA
- Sound attenuated
- Trailer-mounted options

**GLOBAL PUMP**  
A MERSINO COMPANY

# GHT HIGH PERFORMANCE SERIES

## MINE DEWATERING PUMPS

Global Pump High Performance Trash pumps are specifically designed to effectively handle a wide range of liquids from water and sewage, to sludge that can contain solids and other material.

Global Pump High Performance Trash pumps, with advanced enclosed impeller design, provide a dependable, highly efficient solution in a completely automatic priming pump.



✓

**MADE IN USA**  
**ASSEMBLED IN AUSTRALIA**

## FEATURES

- Rugged, heavy-duty pumps engineered specifically for portable application
- Pump casings hydrostatically tested to 50 psig (345 kPa) above the peak casing design pressure
- Available with a variety of priming systems, including the Global Pump Auto Prime automatic priming system

- (compressor-fed venturi priming) or a diaphragm priming system
- Dry running mechanical seal
- Standard engine control panel provides preset emergency shutdown protection and allows the addition of automatic level control

## OPTIONS

- Fuel tanks for extended run times and/or remote location as required
- Skid-mounted or highway trailer with integral fuel cell/chassis, lights, fenders, tie downs, lifting bail, front and rear jacks
- Optional CD4MCu stainless steel for abrasion and corrosion resistance
- Global Pump SoundGuard sound attenuated enclosure options
- Hose racks, accessory containers and other custom features available as required
- Wide range of suction and discharge fittings including Global Pump's own "QD" Quick Disconnect fittings and accessories

## SOUNDGUARD ENCLOSURE



12-gauge Powder Coated Steel (or optional stainless steel), double-sided-galvanneal sheet panels insulated with a 1" thick acoustical foam barrier fire retardant composite reduces noise level to no more than 68 db at 30 feet (9 m). Designed for upward exhaust of combustion gases and cooling air. Panels are removable for maintenance and repair. Panel doors, with locks, for access to the pump, engine, priming system and controls for routine servicing, lubrication and fueling.

## SPECIFICATIONS

MODEL	SIZE	MAX FLOW		MAX HEAD	MAX SOLIDS
		gpm	m <sup>3</sup> /h		
	mm			m	mm
4GHT	100 x 100	1600	341	53	76.2
6GHT	150 x 150	3200	727	68	76.2
8GHT	200 x 200	4550	1033	80	101.6
12GHT	300 x 300	8500	1930	51.5	101.6
18GHT	450 x 350	15000	3400	54	114.3
24GHT	600 x 450	16000	3634	72	114.3

# GSH HIGH HEAD SERIES

## MINE DEWATERING PUMPS

Global Pump Standard High Head pumps are specifically designed to effectively handle a wide range of liquids in applications such as liquid transfer, wash down, fire protection, fracking and jetting where high head and pressure are required.

Global Pump Standard High Head pumps with advanced enclosed impeller design provide a dependable, highly efficient solution in a completely automatic priming pump.



**MADE IN USA**  
**ASSEMBLED IN AUSTRALIA**

## FEATURES

- Rugged heavy-duty pumps engineered specifically for portable applications
- Pump casings hydrostatically tested to 50 psig (345 kPa) above the peak casing design pressure
- Available with a variety of priming systems, including the Global Pump Auto Prime automatic priming system (compressor-fed venturi priming) or a diaphragm priming system

- Dry running mechanical seal
- Standard engine control panel provides preset emergency shutdown protection and allows the addition of automatic level control
- Highest flow rate in pump size class
- Less diesel used per litre pumped

## OPTIONS

- Fuel tanks for extended run times and/or remote location as required
- Skid-mounted or highway trailer with integral fuel cell/chassis, lights, fenders, tie downs, lifting bail, front and rear jacks
- Optional CD4MCu stainless steel for abrasion and corrosion resistance
- Global Pump SoundGuard sound attenuated enclosure options
- Hose racks, accessory containers and other custom features available as required
- Wide range of suction and discharge fittings including Global Pump's own "QD" Quick Disconnect fittings and accessories

## SPECIFICATIONS

MODEL	SIZE	MAX FLOW		MAX HEAD	MAX SOLIDS
	mm	gpm	m <sup>3</sup> /h	m	mm
4GSH	100 x 75	1380	313	132	15.9
6GSH	150 x 100	2100	477	126	22.2
8GSH	200 x 150	3850	874	125	34.9
10GSH	250 x 200	4750	1080	104	38.1
12GSH	300 x 200	6750	1533	104	38.1

## SOUNDGUARD ENCLOSURE

12-gauge Powder Coated Steel (or optional stainless steel), double-sided-galvanneal sheet panels insulated with a 1" thick acoustical foam barrier fire retardant composite reduces noise level to no more than 68 db at 30 feet (9 m). Designed for upward exhaust of combustion gases and cooling air. Panels are removable for maintenance and repair. Panel doors, with locks, for access to the pump, engine, priming system and controls for routine servicing, lubrication and fueling.

# MAGNETIC DRIVE PUMPS



---

## DB SERIES & ULTRACHEM<sup>®</sup> UC SERIES MAG-DRIVE CENTRIFUGAL PUMPS

- Sealless mag-drive design
- Engineered for performance and proven in the field
- Runs dry for hours without damage when equipped with a carbon bushing
- Best efficiency of any pump in its class
- Polypropylene or PVDF corrosion resistant construction
- Tough ductile iron construction
- ANSI dimensional for efficient installation
- Sealless mag drive design features powerful neodymium magnets



# ULTRACHEM® SERIES

## SEALLESS ANSI MAG-DRIVE PUMPS



Finish Thompson's UltraChem® range is composed of leak-free and magnetically driven pumps. With a clever case design and carefully chosen materials, the UltraChem pumps promise maximum reliability even in the most extreme situations without risk of sudden leaks and failure.

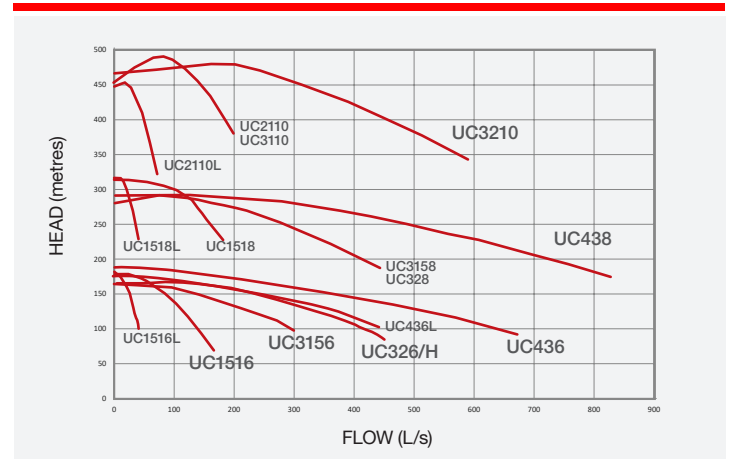
The UltraChem® series prioritises maximising the time between routine services by incorporating materials with high resistance to corrosion caused by strong chemicals. Specifically, the series combines a tough ductile iron casing with a Tefzel (ETFE) lining for superior corrosion resistance.



## SPECIFICATIONS

Maximum working pressure	300 psi (20.7 Bar)
Maximum viscosity	over 200 cP
Maximum temperature	250°F (121°C)
Flow range	models from 1 to 1,450 gpm (.3 to 329.3 m <sup>3</sup> /hr)
Maximum head	models from 73 feet to 492 feet (30.7 to 150 meters)
Specific gravity	over 1.8
Casing	ANSI/ASME B73.1m & 73.3
Flanges	ANSI, ISO/DIN
Certifications	CE / ATEX
Motor frames	<ul style="list-style-type: none"> <li>— NEMA: 143 through 405</li> <li>— IEC: 90 through 280</li> <li>— Bearing frame</li> <li>— Gas engine</li> </ul>

## PERFORMANCE CURVES



## MODEL SELECTION

Model	Flange ANSI 150 lb Suction/Discharge		Max Impeller Size (cm)	Max Flow 2900 rpm (m <sup>3</sup> /hr)	Max Head 2900 rpm (meters)
UC1516L	1.5"	1"	16.2	9	36
UC1516	1.5"	1"	16.2	30	37
UC1518L	1.5"	1"	20.6	8.6	69
UC1518	1.5"	1"	20.6	38	65
UC2110L	2"	1"	26.7	17	94
UC3110	3"	1"	26.7	38	102
UC3156	3"	1.5"	16.2	50	30
UC3158	3"	1.5"	21	80	62
UC326	3"	2"	16.2	95	34
UC326H	3"	2"	16.2	95	34
UC328	3"	2"	20.6	85	62
UC3210	3"	2"	26.7	105	100
UC436	4"	3"	16.2	125	10
UC436L	4"	3"	16.2	85	35
UC438	4"	3"	21	160	60
UC4310H	4"	3"	25	200	24
UC6410	6"	4"	26.7	329	34

## APPLICATIONS

- ✓ Chemical processes
- ✓ Steel processing
- ✓ Water and waste water
- ✓ Electronics manufacturing
- ✓ Pharmaceuticals
- ✓ Surface finishing
- ✓ Paper mills
- ✓ Biofuels
- ✓ Fume scrubbing
- ✓ Metal plating

# DB SERIES

## FLOODED SUCTION PUMPS



The DB Series by Finish Thompson is the standard for hydraulic efficiency and corrosive fluid handling. Engineered for performance and backed by an industry best 5-year warranty.

Offers peace of mind and optimal operating features including no leaks, ease of maintenance and application for difficult liquids. Best efficiency of any pump in its class with option of horizontal or vertical installation and high specific gravity handling over 1.8.



## APPLICATIONS

- ✓ Chemical processes
- ✓ Metal plating/working
- ✓ Wastewater treatment
- ✓ Electronics manufacturing
- ✓ OEM equipment supply
- ✓ DI & high purity water
- ✓ Fume scrubbing
- ✓ Mining
- ✓ Paper mills
- ✓ Printing
- ✓ Pharmaceutical
- ✓ Chillers

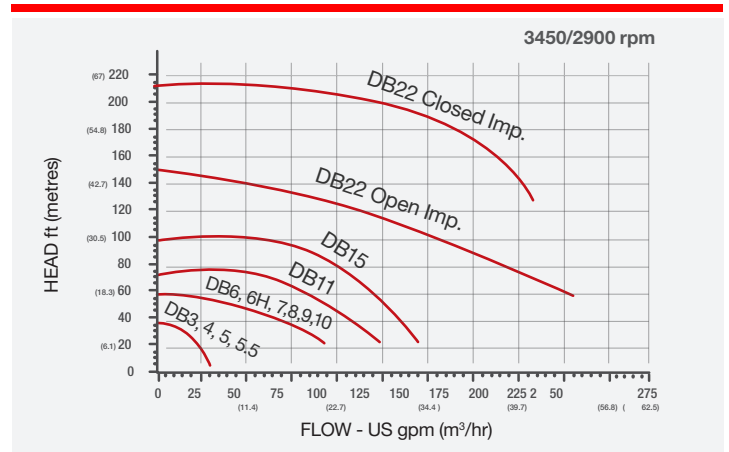
## FEATURES & BENEFITS

- Close-coupled design
- NPT or BSP threaded, raised fac adjustable flanges or union connections.
- Up to 70% operating efficiency
- Polypropylene or PVDF construction
- Neodymium magnets on every model, the most powerful and efficient magnets available. Inner magnets are completely encapsulated in unfilled polypropylene or PVDF for superior magnet protection.
- Run dry system allows for hours of run dry without damage when equipped with a chemical grade carbon bushing.
- Replaceable shaft and bushing
- Two piece impeller design allows impeller to be changed without having to replace inner drive.
- ISO 1940 G2.5 balancing
- Mounts to NEMA and IEC motor frames
- Easy Set measurement-free outer drive ensures optimum magnet alignment and easy motor installation
- Mounts to motor without disassembly
- Back pullout design
- Five-year warranty
- CE certified
- ATEX available

## SPECIFICATIONS

High working pressure	Up to 90 psi
Max viscosity	Over 150 cP
Max temperature – Polypropylene	82°C (180°F)
Max temperature – PVDF	104°C (220°F)

## PERFORMANCE CURVES





# DEWATERING TANKS & PUMP STATIONS



**BUILT IN  
SLURRY  
MANAGEMENT**  
for primary treatment of  
solids settlement.

---

## FISH TANKS & CUSTOM PUMP STATIONS

- High-pressure dewatering for underground mining
- Transfer of silty water from shafts
- Reliable slow speeds for longer lasting pumps
- Customisable and built to your requirements
- Silt/sludge cleaning management system



# FISH TANKS & CUSTOM PUMP STATIONS



All-Pumps designs and manufactures a comprehensive range of dewatering fish tanks to cater to different dewatering situations.

Our dewatering fish tanks have special filtering systems to separate liquid from solids or sludge before discharging waste for easy transport to its final approved destination. They are built using robust materials, offering long service life and come with many options for dewatering pumps.



## APPLICATIONS

- ✓ Underground mining
- ✓ Water treatment
- ✓ Tunnelling
- ✓ High-pressure dewatering

## OPTIONS

- Custom-configured drains and valves
- Sludge cleaner
- Custom flow & pressure options
- Built to your application (duty)
- Slow speed pumps for reliability

## FEATURES & BENEFITS

- Extremely robust construction, hot dipped galvanised coating or two pack epoxy painted
- Auto sludge mixing (providing constant self-cleaning of tank)
- 415 & 1000 volt options
- Flameproof or non-flameproof
- AS4871 compliance
- Structural engineers certificates
- Stability certificate
- Stainless steel labels
- Removable pump cassette
- Internal compartments for fines settlement and solids trap for effective removal of large solids.

## SPEFICATIONS

Pump Model	Number of Stages	Pump Speed (Nominal)	Flow Rate	Discharge Head (Nominal)	Nominal kW Size
FN-10-450	8	290	10 litres/second	450 metres	90 kW
FN-20-180	3	290	20 litres/second	180 metres	55 kW
FN-20-240	4	285	20 litres/second	240 metres	110 kW
FN-20-360	6	290	20 litres/second	360 metres	110 kW
FN-20-500	8	300	20 litres/second	500 metres	150 kW
FN-30-240	4	275	30 litres/second	240 metres	110 kW

## FEATURES

### Cost-Effective Solution for Dewatering

- Saves having multiple permanent sumps
- Protects and helps pumps last longer
- Slower pumping speeds, less wear from abrasion
- Ready to go instantly, plug-and-play installation in 415 or 1000 volts

### High Durability

- Tougher - Mounted on a drag skid with oversized lifting points
- NDT MPT weld testing for quality as standard
- Stronger external frame on larger models to cope with higher sludge loads
- Made in Australia and tested in our workshop prior to shipping

### Sludge and Solids Removal

- With improved fluid dynamics, our dewatering box maximises large solids removal
- In-built weir walls create settlement chambers, allowing solids to settle and water to flow
- Filters large particles and trash that would damage parts upstream
- Option to automate sludge dewatering

# FISH TANK PUMP STATIONS

## FOR UNDERGROUND & OPEN PIT MINE DEWATERING



The All-Pumps Fish Tank Pump Stations are used extensively in the underground mining industry as a central station to push water to the surface.

Mine water from sumps and the development area is pumped into the fish tank via air pumps or submersible pumps. The fish tank then transfers the water out-by to another fish tank or seam to surface pump station.



## CUSTOM BUILT CONFIGURATIONS

We offer custom-built configurations for both open pit and underground coal mine dewatering applications.

Slurry-Pump Fish Tank



Multiple Pump High Flow Dewatering Station



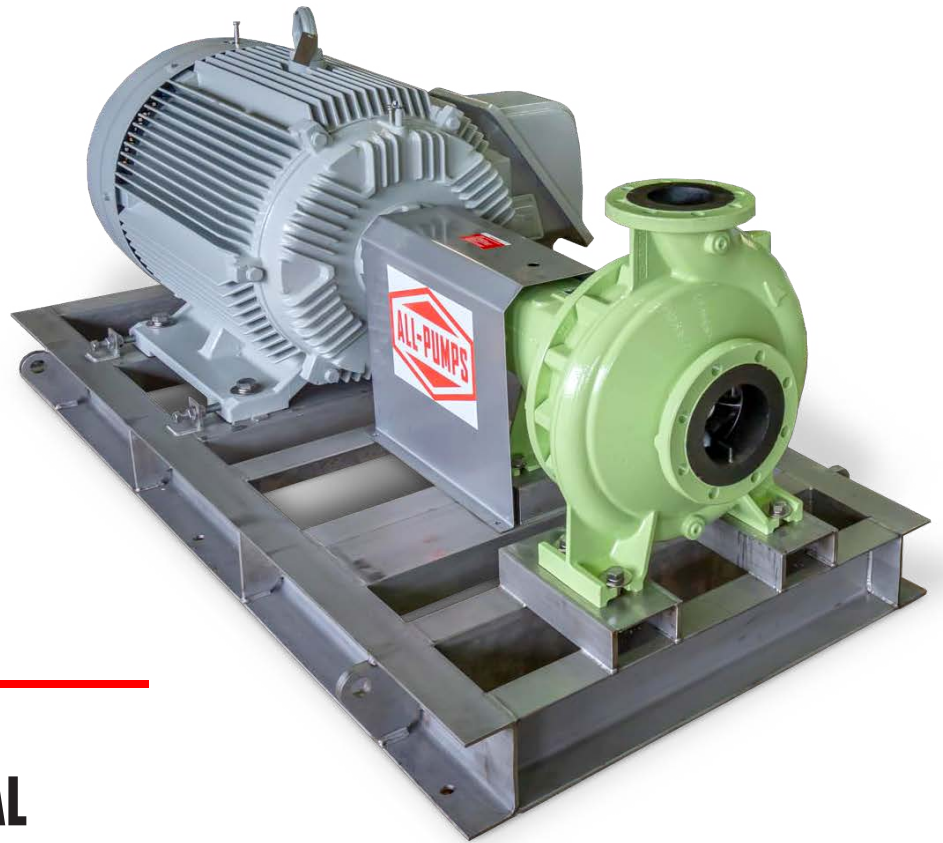
Underground Progressive Cavity Sediment Fish Tank



Dual Pump Station System



# CENTRIFUGAL PROCESS PUMPS



---

## **NEXUS ISOFLOW** END SUCTION CENTRIFUGAL PROCESS PUMPS

- Heavy-duty oil lubricated taper roller bearings
- Australian-designed and manufactured
- Superior hydraulic design & manufacturing methods produce significantly higher efficiencies for lower running costs and reduced maintenance
- Australia-wide backup
- Up to 250 litres per second discharge
- Conforms to ISO 5199

**nexus**

# NEXUS ISOFLOW

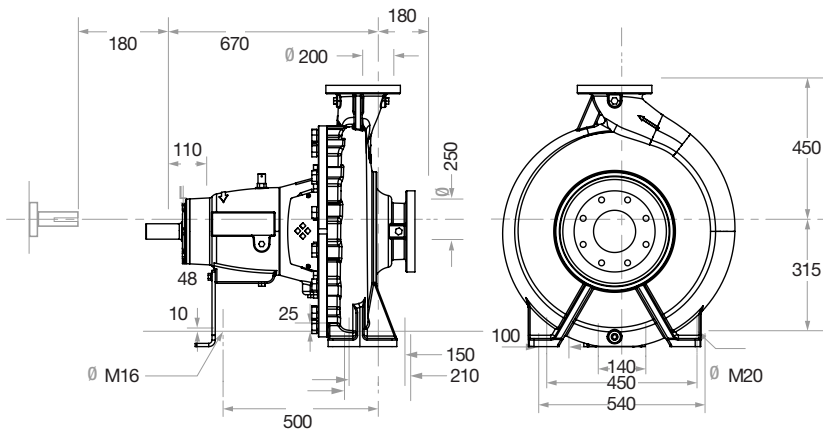
## END SUCTION CENTRIFUGAL PROCESS PUMPS

Designed and manufactured to the highest quality, meeting the requirement of reliability and longevity in the most demanding applications.

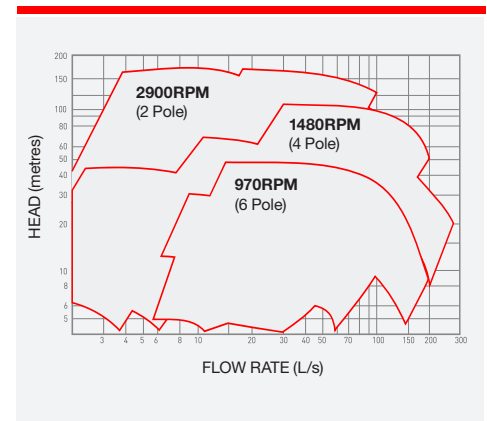
**nexus**



### DIMENSIONS



### PERFORMANCE CURVES



### FEATURES

- Heavy-duty oil lubricated taper roller bearings
- Australian-designed and manufactured
- Superior hydraulic design and manufacturing methods produce significantly higher efficiencies for lower running costs and reduced maintenance
- Australia-wide backup
- Heads up to 160 metres
- Up to 250 litres per second discharge
- Manufactured to ISO 5199 Standard
- Heavy-duty design type 316 shaft
- High strength cast iron bearing housing
- Mechanical seals fitted as standard with single on-shaft mechanical seal
- 1600kPa pressure rating
- Superior hydraulic design and manufacturing processes, together with double curvature impeller blades, provide highly efficient suction performance, higher speed capabilities and greater performance for reduced running costs and maintenance
- Taper mounted impeller for positive drive and easy removal
- Replaceable stainless steel or zinc-free bronze wear rings
- Reusable 'O' ring body seals in Viton as standard and Teflon or EPDM as options
- AS2129 Flanges
- Standard tapplings - Volute drain plug, suction flange tapping for suction gauge and discharge flange tapping for pressure gauge

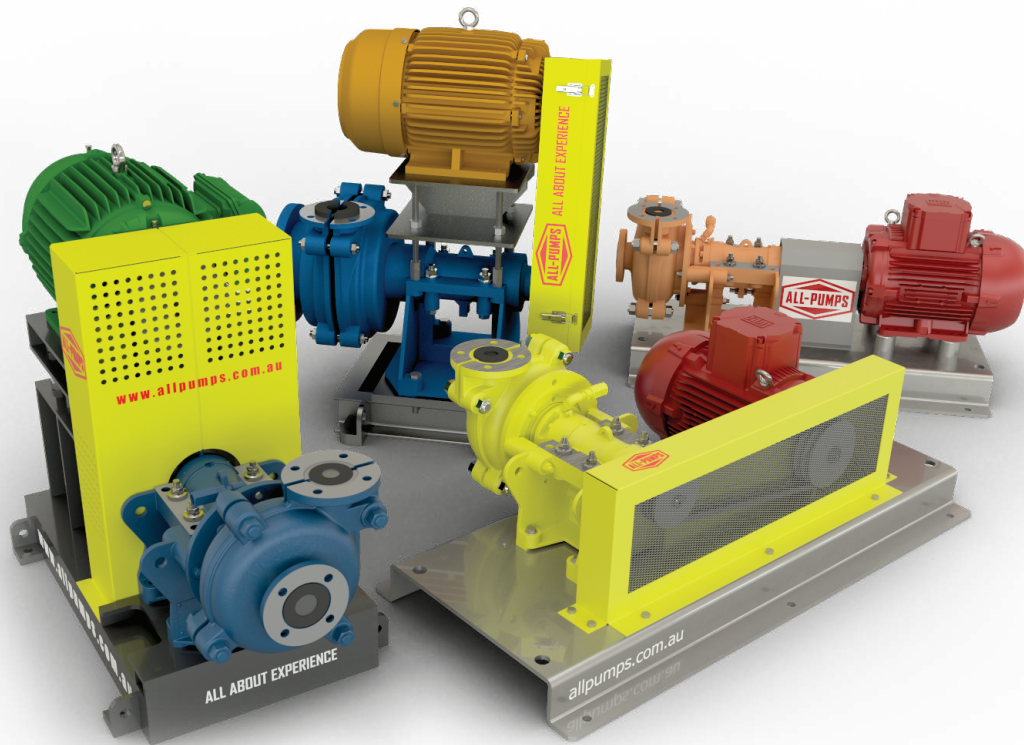
### APPLICATIONS

- ✓ Mining
- ✓ Irrigation
- ✓ Fire protection
- ✓ Industry
- ✓ Processing
- ✓ Agriculture

### OPTIONS



# SLURRY PUMPS



## CENTRIFUGAL & POSITIVE DISPLACEMENT SLURRY PUMPS

- Robust and efficient in handling abrasive solids
- Dry run capabilities
- Designed with improved safety features including belt guard
- Motor mount suitable for use with many different motor sizes for greater compatibility
- Freeze Prevention Technology (FPT) eliminates pump downtime in cold weather
- Superior wear life and reduced lifetime costs
- Ease of ongoing maintenance
- High-quality Warman equivalent spare parts available

**nexus**

# NEXUS HORIZONTAL SLURRY PUMPS

Nexus offers a range of slurry pumps available in horizontal or vertical designs. Their rugged construction allows them to withstand arduous transfer duties, including moving abrasives, high-density slurries, and large particles. Optimised design and construction meet the most stringent requirements set by different industries for handling slurries and to minimise pump downtime.

## FEATURES

- Mechanical seals fitted as standard with single on-shaft mechanical seal
- Complete range of sizes available across the full selection of pump types and materials
- Range of seal types available for every requirement
- Components come in a range of elastomer and hard metal types and materials to suit any application
- Abrasion and corrosion-resistant
- Removable cartridge-type bearing assembly



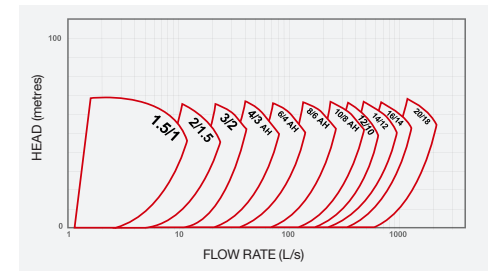
## APPLICATIONS

- ✔ Dewatering
- ✔ Slurry transfer
- ✔ Particle suspension
- ✔ Mineral transfer for processing
- ✔ Mineral refinement
- ✔ Tailings disposal

## SPECIFICATIONS

Lift	10-160m (Customisable)
Motor Power	7.5-800KW (Customisable)
Flow Range	10-10000m <sup>3</sup> /h (Customisable)
Speed	300-1450r/min
Inlet/Outlet Diameter	DN40-500mm (Customisable)

## PERFORMANCE CURVES



# NEXUS VERTICAL SLURRY PUMPS

## FEATURES

- Heavy-duty range features a cantilever shaft design
- Complete elastomer lined pumps
- Hard metal options for corrosive and abrasive media duties
- Customisable sizes, column lengths and impeller designs
- Ideal for corrosive coarse particles and high concentrations of slag pulp
- Widely used in the metallurgical, mining and coal industries



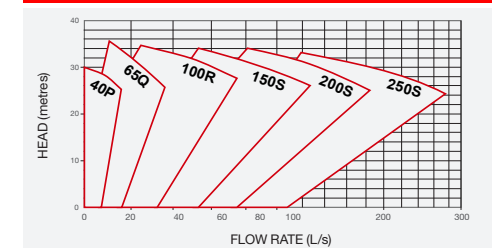
## APPLICATIONS

- ✔ Dewatering
- ✔ Slurry transfer
- ✔ Particle suspension
- ✔ Mineral transfer for processing
- ✔ Mineral refinement
- ✔ Tailings disposal

## SPECIFICATIONS

Lift	10-50 m (Customisable)
Motor Power	4-630 kW (Customisable)
Flow Range	10-800 m <sup>3</sup> /h (Customisable)
Speed	1450/2900 r/min
Inlet/Outlet Diameter	Consult customer service

## PERFORMANCE CURVES





# PERISTALTIC HOSE PUMPS



---

## HD/HDX SERIES PERISTALTIC HOSE PUMPS

- Flows up to 36000 LPH
- Pressures 1.6 MPa
- Suction lift up to 9.5 metres
- Viscosities 352,000 SSU

**ABAUQUE**<sup>™</sup>  
PERISTALTIC HOSE PUMP

# HD/HDX SERIES

## PERISTALTIC HOSE PUMPS

The Abaque pump housing is constructed of heavy-duty ductile iron and steel and designed to provide reliable continuous pump operation. The pump utilises a rugged close-coupled gear reducer.

These pumps boast durability and efficiency amid abrasive and aggressive fluid handling.

Flow can be reversed, enabling full capacity and drainage.

### FEATURES & BENEFITS

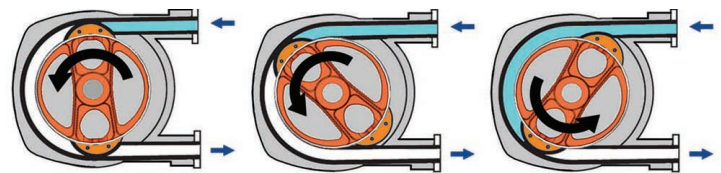
- Gentle pumping, reversible flow
- No piping, plugs or connections on front cover
- Heavy-duty ductile iron and steel construction
- Self-priming up to 9 metres
- Sealless, leak-free, eliminates product contamination
- Ability to run dry continuously



### APPLICATIONS

- ✔ Slurry transfers
- ✔ Chemical dosing
- ✔ Water treatment
- ✔ High pressure transfer
- ✔ Thickener underflow
- ✔ Milk of lime slurries
- ✔ Mine sludge
- ✔ Mine clay slurry
- ✔ Mine lead sulfate
- ✔ Mine pyrite slurry

### PUMP OPERATION



#### Durable

Ductile iron and steel construction allow higher discharge pressures to 16 bar (232 psi). Its solid construction and advanced design also reduce maintenance and repairs.

#### Reliable

The Abaque HD Series pump is self-priming to 9.5 m (32.8 ft) manometric lift. This pump is able to run dry continuously without detrimental effects. The pump is capable of running in forward or reverse.

#### Seal-Free

Seal-free design eliminates leaks and contamination. Fluids are contained within the hose. The hose is the primary maintenance component.

### PERFORMANCE DATA

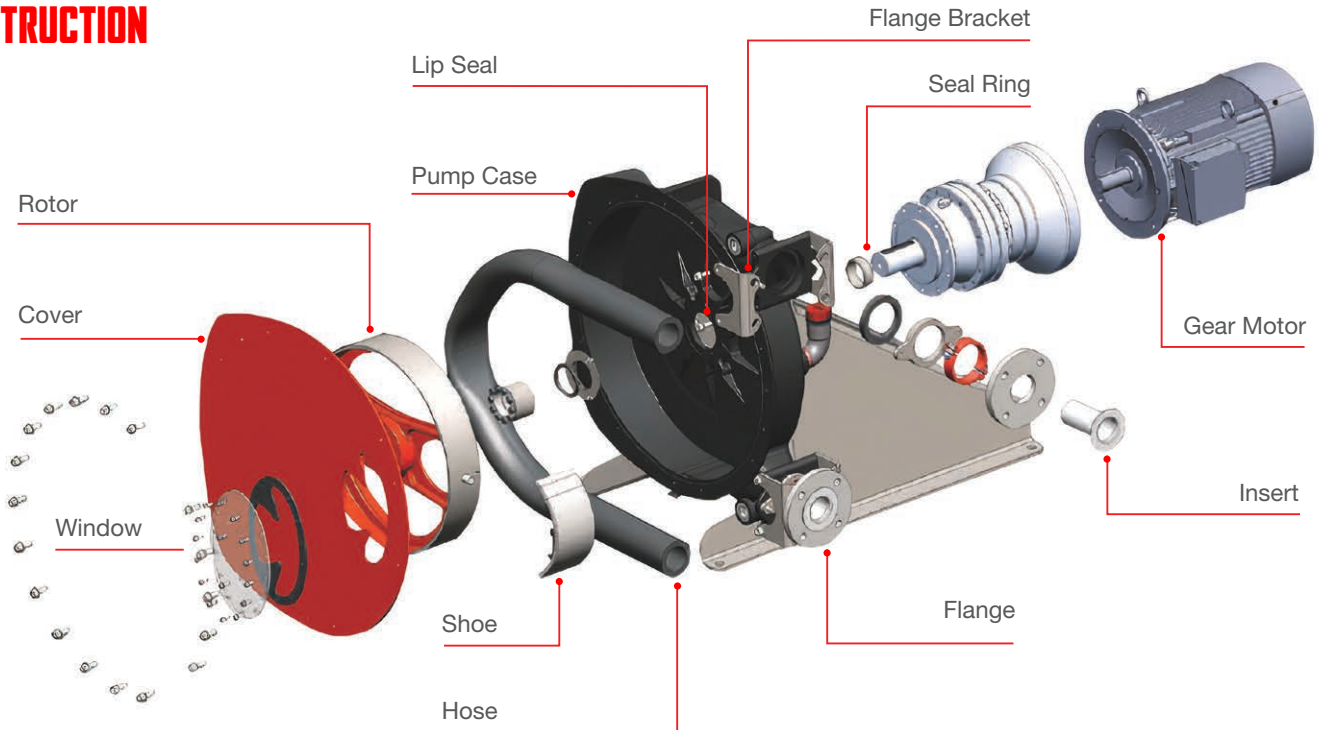
	HD10	HD15	HD20	HD25	HD32	HD40	HDX40	HD50	HD65	HDX65	HDX80	HD80	HD100
Intermittent Max flow rate (litres/hour)	135	450	750	2,670	5,300	7,200	9,600	15,300	18,200	26,000	37,300	39,000	54,000
Continuous Max flow rate (litres/hour)	105	340	580	1,670	3,200	4,650	6,400	9,300	12,150	17,500	21,300	26,000	36,000
Maximum differential pressure	7.5 bar 109 psi	7.5 bar 109 psi	7.5 bar 109 psi	16 bar 32 psi	16 bar 32 psi	16 bar 32 psi	16 bar 32 psi	16 bar 32 psi	16 bar 32 psi	16 bar 32 psi	16 bar 32 psi	16 bar 32 psi	16 bar 32 psi

# HD/HDX SERIES

## PERISTALTIC HOSE PUMPS

Abaque pumps have been specifically designed to meet the challenging requirements of the mining industry thanks to a ductile iron housing and stronger rotor system. With no moving parts that come into contact with the product and the ability to handle slurries that contain up to 80% solids with ease.

### CONSTRUCTION



### PARTS / MATERIALS

Part name	Material	Part name	Material
Pump case	Ductile iron	Flange and brackets	Stainless steel - ANSI or DIN
Wheel	Ductile iron	Hoses	Natural rubber, Buna (NBR), EPDM or Hypalon®
Shoes	Aluminum or cast iron	Hoses inserts	Stainless steel (std.), PPH or PVDF
Cover	Steel and Plexiglas		

### HOSE TYPES

NATURAL RUBBER	Highly resilient with excellent abrasion resistance and strength
BUNA (NBR)	Highly wear resistant to oily products (FDA approved)
EPDM	High chemical resistance, especially with concentrated acids, alcohols, and ketones
HYPALON®	Resistant to chemicals. High resistance to oxidants, as well as to concentrated bases and acids.



# WORKSHOP & LUBRICATION



## FEATURES

- Fire-Ball® Piston Pumps
- Hose Reels & Lubrication
- Automatic Lubrication
- Injectors

 **GRACO**

# FIRE-BALL® 300 SERIES

## PISTON PUMPS



For over 60 years, Graco Fire-Ball® pumps and packages have been a mainstay in the lubrication marketplace for durability and long life. Designed for the toughest applications, the Fire-Ball® brand repeatedly outperforms and outlasts the competition.

## FEATURES

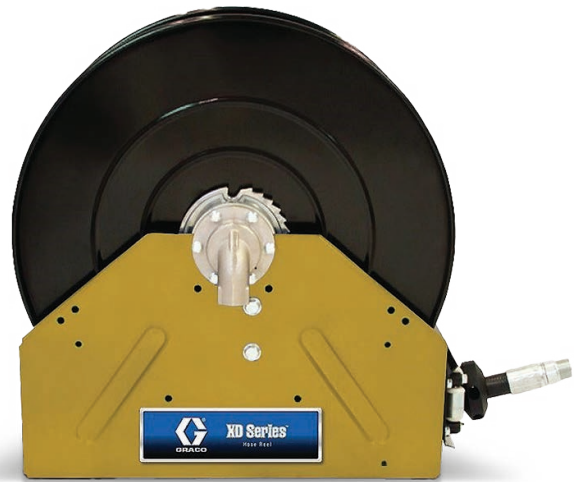
- Long-lasting reliable pumps
- Fewer moving parts in the air motor assembly means less downtime and low repair cost
- Flexible pumps choose one for low, medium or high-volume applications
- Industry-leading performance and reliability



# XD™ SERIES

## HOSE REELS

Graco's XD™ Series hose reels are designed to handle high-performance, heavy-duty applications. Easily retract larger lengths and diameters of hose with electric, pneumatic and hydraulic rewind options.



XD40-50

## FEATURES

- Enclosure protects hose from dirt and grime, extending hose life
- Flexible installation options – ceiling, wall, truck or bench
- Full-flow swivel maximises material flow with minimal pressure drop for faster fills
- Spring-rewind type for easier and faster rewinding of hose
- Durable and lasting construction
- Spring adjustment feature increases or decreases spring tension

# G3<sup>®</sup> SERIES

## AUTOMATIC GREASE & OIL LUBRICATION PUMPS

Graco designs and builds a comprehensive family of automatic grease pumps and oil lubrication pumps for on-vehicle and off-road applications. You can count on our field-proven oil pumps to stand up to the harsh environments you work in every day.

Reliability is critical for on-road mobile applications and Graco comes through, with pumps engineered to maximise uptime.

### FEATURES

- Designed for long-lasting performance and reliability.
- Able to stand up to harsh working conditions and high wear-and-tear environments.
- Cost-effective lube pumps provide versatility for all applications.
- Extend equipment life with these hard-working automatic grease and oil pumps.
- Graco Trace cellular connectivity provides real-time data at your fingertips.



# GCI<sup>®</sup> SERIES

## GREASE & OIL INJECTORS

Graco GCI<sup>®</sup> Injectors offers next-level performance, durability and plug-and-play simplicity.

The revolutionary new cartridge injector system from Graco establishes a new level of durability and serviceability by delivering double the life of current grease injectors while cutting individual injector replacement installation time from minutes to seconds. The radical new design doubles the output of current replacement injectors at a lower cost for unprecedented uptime as well as savings on labor costs.

### FEATURES

- Through groundbreaking simplicity, serviceability and durability, the new cartridge grease injectors will transform uptime and maintenance expectations – ultimately improving overall company profitability.
- Backed by an A+ customer service commitment we understand the mission critical importance of standing behind every product to keep your operations running.



# STORE SUPPORT & SPARE PARTS



**SLURRY  
PUMP PARTS**



**MECHANICAL  
SEALS**



**PERISTALTIC  
HOSES**

## ASK THE EXPERTS

We are committed to providing our customers with a quality service every time! We provide turnkey pumping solutions for all parts of Australia.

- ☎ 1300 255 786
- ✉ [service@allpumps.com.au](mailto:service@allpumps.com.au)
- 🌐 [allpumps.com.au](http://allpumps.com.au)
- 📍 100 Silverwater Road, Silverwater NSW 2128







50

**YEARS OF  
EXPERIENCE**



**WE'RE ALL ABOUT  
EXPERIENCE.**

[allpumps.com.au](http://allpumps.com.au)





**We're All About Experience**  
[allpumps.com.au](http://allpumps.com.au)