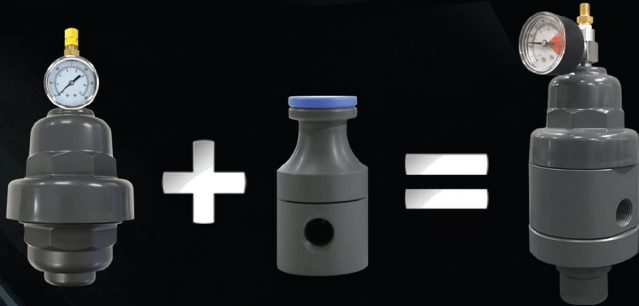




The future of high-performance metering pump systems.  
Introducing the world's first combination pulsation dampener & back pressure valve:

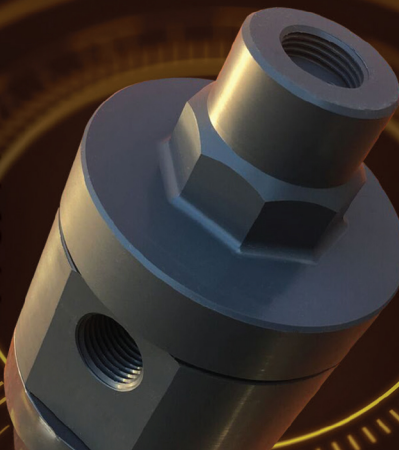
# BLACOH HYBRID VALVE™



## THE ALL IN ONE SMART CHOICE:

The new patented Hybrid Valve™ from Blacoh combines the steady flow control of a pulsation dampener and the regulation of a back pressure valve to deliver the performance and functionality of both. Why install and maintain two pieces of equipment when the Hybrid Valve™ does the same, only better.

LESS SPACE  
LESS LEAK POINTS  
LESS MAINTENANCE

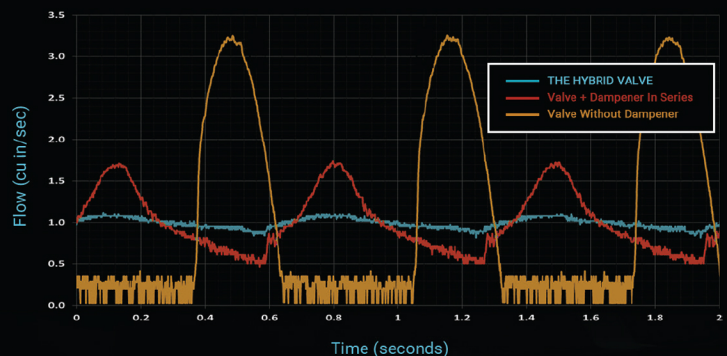


MORE EFFICIENCY  
MORE FUNCTIONALITY  
MORE PROTECTION

## THE PERFORMANCE IS IN THE NUMBERS:

The state-of-the-art Hybrid Valve™ was engineered with proven principles for optimum performance and maximum efficiency, saving you costs in the long run.

In a metering pump system, using a back pressure valve alone does nothing to improve fluid flow (orange). The flow improves significantly when put in series with a pulsation dampener (red). But neither result can match the excellent laminar performance of the single construction Hybrid Valve™ as the two functions work in unison (blue).





# BLACOH HYBRID VALVE™



## TRUST THE FLUID CONTROL EXPERTS: NO CHATTER & SMOOTHER FLOW

Location and proximity are key when installing pulsation dampeners and back pressure valves in any pumping system.

A back pressure valve installed in series with a dampener can negate the dampening effect if the valve is opening and closing before the dampener is able to get a full pulse. This quick-opening effect can also create too much gain within the back pressure valve resulting in inefficiency and chatter.

By combining the dampener and back pressure valve into a single engineered unit, we've eliminated the most common issues with installation for a more efficient, simplified system.

## TECH SPECIFICS



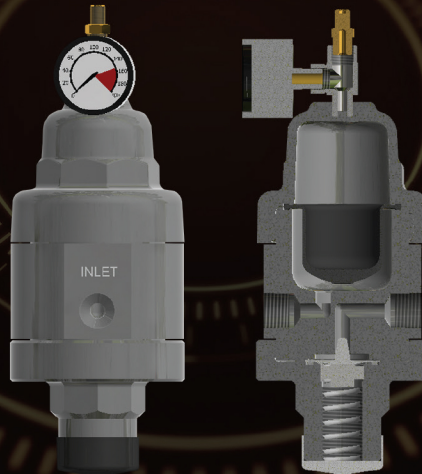
**Air Control Type:**  
Chargeable  
**Dampener Volume:**  
10 cu in (0.16L)



**Wetted Housing:**  
PVC or CPVC  
**Non-Wetted Housing:**  
PVC or CPVC



**Bladder/Bellows Material:**  
Buna-N, EPDM,  
Hypalon, Neoprene,  
PTFE, Santoprene,  
Silicone Food Grade,  
Viton  
**Valve Diaphragm Material:**  
PTFE



**Spring:**  
Zinc Plated Carbon Steel  
**Spring Housing (Non-Wetted Side):**  
PVC  
**Spring Adjustment Screw:**  
PVC  
**Spring Seat:**  
PVC



**Inlet Connection Options:**  
1/4" (6.4mm) NPT or BSP  
3/8" (10 mm) NPT or BSP  
1/2" (13 mm) NPT or BSP  
1/2" (13 mm) Union Connection  
1/2" (13 mm) Socket Weld  
1/2" (13 mm) Socket Weld Flange



**Standard Dimensions:**  
Height: 9.0" (229 mm)  
Diameter: 3.5" (89 mm)

## MODEL NUMBERS

Contact our sales team or enter the model number into our online SpeedQuote

H10		- 049 -		CV		- BT -		BSP		- L	
SERIES:	INLET SIZE:	EXTERNAL HOUSING:		INTERNAL MATERIALS:		INLET TYPE		SPRING		PRESSURE RANGE	
HYBRID VALVE	0.25" -025	WETTED	NON-WETTED	BLADDER	DIAPHRAGM	FNPT					
10 CU IN	0.375" -038	PVC -V	PVC V	BUNA-N -B	PTFE T	BSP		-BSP	10-150 PSI		
	0.50" -049	CPVC -C	CPVC C	EPDM -E		SOCKET WELD -SW		-U	10-50 PSI	-L	
				HYPALON -H		UNION					
				NEOPRENE -N							
				PTFE -T							
				SANTOPRENE -W							
				SILICONE (FG) -S							
				VITON -V							

**CELEBRATING**

**50**

**YEARS OF EXPERIENCE**

**EXPERIENCE INNOVATIVE  
THINKERS AND PRODUCTS**



**ALL ABOUT EXPERIENCE**

[allpumps.com.au](http://allpumps.com.au)

**1300 255 786 | [sales@allpumps.com.au](mailto:sales@allpumps.com.au)**