

# KGC

## Gear Pumps



### Specifications (based on water)

Model	KGC - 13	KGC - 20	KGC - 25	KGC - 35	KGC - 50	KGC - 80
Port Diameter	13	20	25	35	50	80
R.P.M	400	400	400	400	400	400
Flow Rate (L/Min)	21	37	55	121	242	455
Pressure (kpa)	300	300	300	300	300	300
Power (kW)	0.25	0.37	0.75	1.5	3	5.5
Weight (kg)	4	6	11	35	45	82

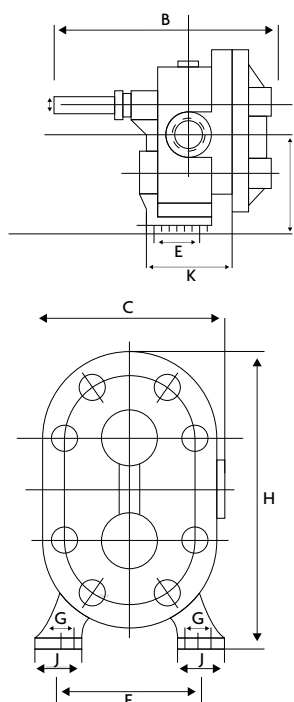
### Features

- Rugged and robust construction
- Wide range of applications
- Temperatures up to 150°C

### Construction

- CASING: Cast Iron
- GEARS: Cast Iron
- SHAFT: Mild Steel
- BEARINGS: Cast Iron
- PACKING: Graphite Impregnated

### Dimensions (mm)



	KGC - 13	KGC - 20	KGC - 25	KGC - 35	KGC - 50	KGC - 80
<b>A</b>	18	20	22	20	24	28
<b>B</b>	181	201	247	277	304	401
<b>C</b>	100	110	134	160	210	465
<b>D</b>	87	103	125	164	233	308
<b>E</b>	-	28	33	70	75	90
<b>F</b>	72	94	113	142	168	208
<b>G</b>	2-ø10	4-ø10	4-ø10	4-ø12	4-ø18	4-ø18
<b>H</b>	130	153	187	231	332	439
<b>I</b>	66	78	93	121	168.5	217
<b>J</b>	29	37	41	42	45	45
<b>K</b>	47	57	72	124	130	142

### Applications

- tallow
- transformer oil
- heating oil
- printers ink
- paint
- bitumen emulsion
- molasses
- jelly products
- fertilizer
- dieselene
- kerosene
- lubricating liquids