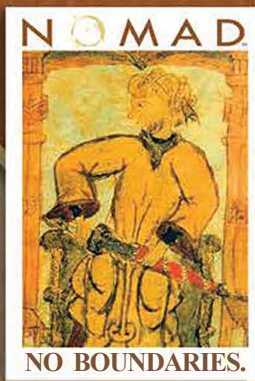




WE'RE ALL ABOUT EXPERIENCE

allpumps.com.au

**THE
AFTER-MARKET
DIAPHRAGM
PUMP
PRODUCTS
PROVIDER**



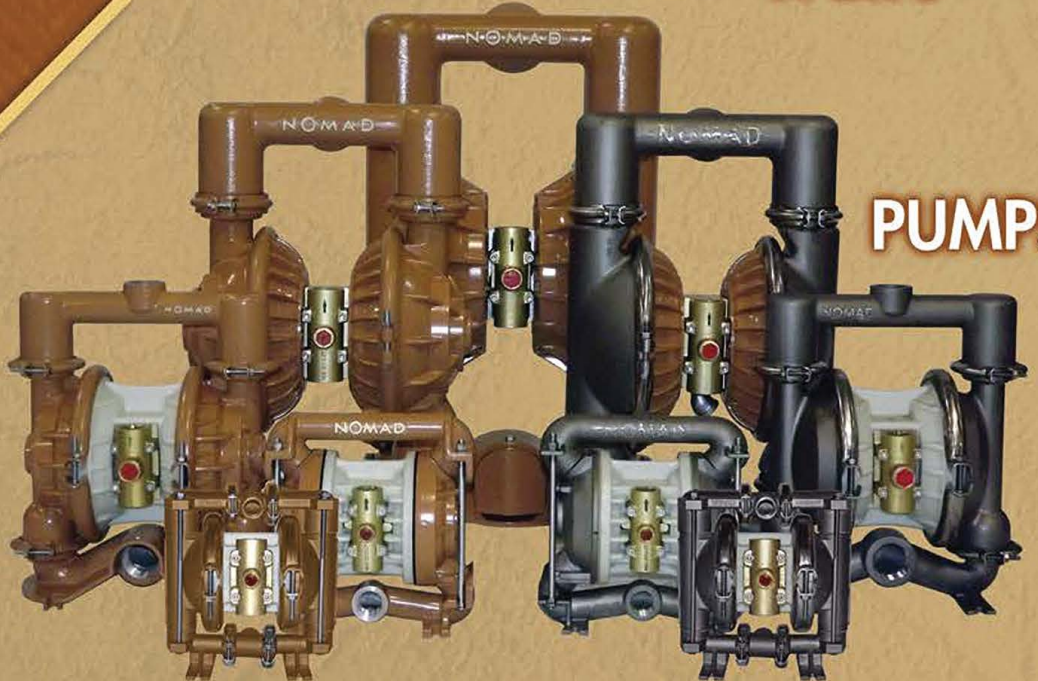
LARGEST INVENTORY

LOWEST PRICES

FASTEST DELIVERY



PARTS



PUMPS

WORLD CLASS MAINTENANCE, REPAIR & OPERATION



FAST & FLEXIBLE

JDA Global LLC (EST. 2011) serves as the world's largest & most experienced after-market diaphragm pump products provider. We leverage our deeply embedded industry knowledge each day to bring our worldwide distributor and customer network a low cost, high quality product, with rapid delivery & "easy to do business with" customer service.

EXPERTISE

90 YEARS OF EXPERIENCE
WITH DIAPHRAGM PUMPS AT
OWNERSHIP LEVEL

100% ORDER FULFILLMENT

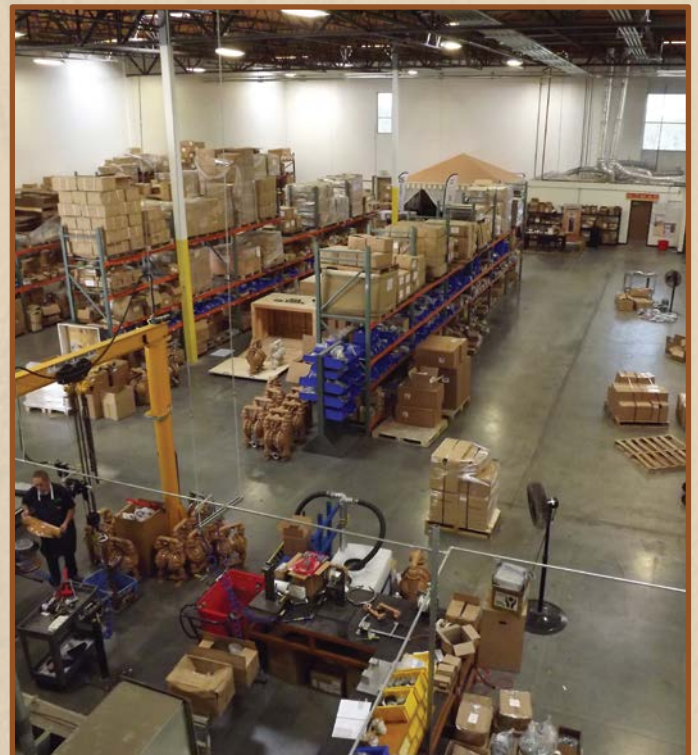
LARGEST WORLDWIDE
INVENTORY OF AFTER-MARKET
DIAPHRAGM PUMP PARTS

LOW COST PROVIDER

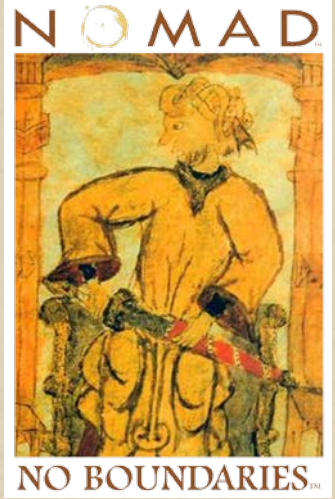
PRICE POINT GOAL: 15% BELOW
OEM DISTRIBUTOR NET PRICE



WE OWN THE TOOLS/MOLDS



14,000 SQ. FT. WAREHOUSE (REDLANDS, CA)



AFTER-MARKET DIAPHRAGM PUMP PARTS



THE NOMAD BRAND

Features thousands of after-market parts in stock at our California USA Facility. NOMAD parts are produced in collaboration with the world's finest suppliers of AODDP Products. From investment casting to injection molding, JDA Global's supply chain network is second-to-none in providing high quality rubber, metal & plastic parts



NOMAD™

LOW COST, HIGH QUALITY
AIR DIAPHRAGM PUMPS

TRANS-FLO PUMPS

- 5 SIZES: 1/2", 1", 1.5", 2" & 3"
- ALUMINUM & 316 S.S. MODELS
- CLAMP BAND CONSTRUCTION
- ALL MAJOR ELASTOMER OPTIONS
- SIMPLE, PROVEN DESIGN
- MADE IN USA
- FASTEST DELIVERY IN THE INDUSTRY

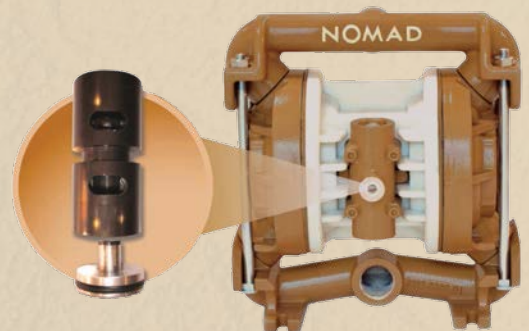


ALUMINUM



316 S.S.

FEATURING
TRANS-FLO
GOLD™
AIR DISTRIBUTION SYSTEM
NON-STALLING



PATENT PENDING
DIFFERENTIAL CAP DESIGN

HARD HAT™ MINING & CONSTRUCTION

AODDP's are used worldwide at rugged mining & construction job sites. Whether placed at the rock face or de-watering for a highway project, NOMAD Hard Hat™ series pumps (3 Sizes of aluminum) will evacuate solid-laden liquids quickly and economically. The screen base design with strainer-like vertical slots serve to capture large particulates (stone, heavy sand, dirt, etc.) before they can clog connection points, manifolds or chambers.



ELASTOMER KITS

Shrink-wrapped and placed on our NOMAD brand cardboard backing, the elastomer wear part kits make for "one-stop shopping" while assuring that the customer receives the right parts for the job upon disassembly and repair. Over 200 elastomer kit options are available, featuring every key elastomer material.



TRACKER™ SEALS

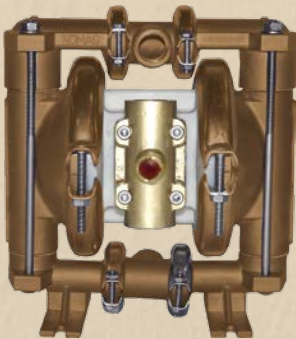
NOMAD shaft o-ring seals feature a proprietary design created by the world's preeminent seal material specialist.



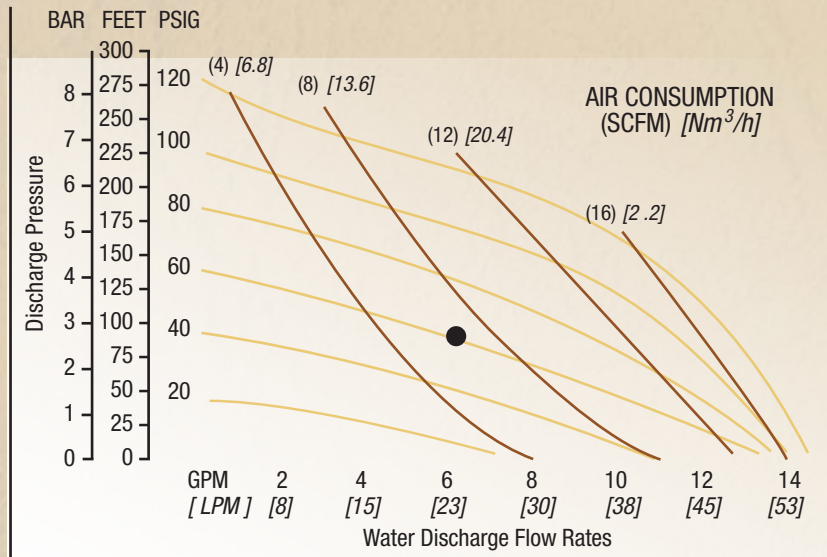
Low cost, water resistant & easy to install, the Tracker™ Seal allows for a sharp shift & quality on/off reliability.

PERFORMANCE DATA

NTG15



Air Inlet	6 mm (1/4")
Inlet.....	13 mm (1/2")
Outlet.....	13 mm (1/2")
Suction Lift	1.22 m Dry (4')
	9.14 m Wet (30')
Max. Flow Rate	54.9 lpm (14.5 gpm)
Max. Size Solids	1.6 mm (1/16")
Height	224 mm (8.8")
Width	208 mm (8.2")
Depth.....	178 mm (7.0")
Est. Ship Weight	Aluminum 6 kg (13 lbs)
	316 S.S. 9 kg (20 lbs)



Flow rates indicated on chart were determined by pumping water.

For optimum life and performance, pumps should be specified so that daily operation parameters will fall in the center of the pump performance curve.

Example: To pump 22.7 lpm (6.0 gpm) against a discharge pressure head of 2.7 bar (40 psig) requires 4 bar (60 psig) and 10.2 Nm³/h (6 scfm) air consumption. (See dot on chart).

Caution: Do not exceed 8.6 bar (125 psig) air supply pressure.

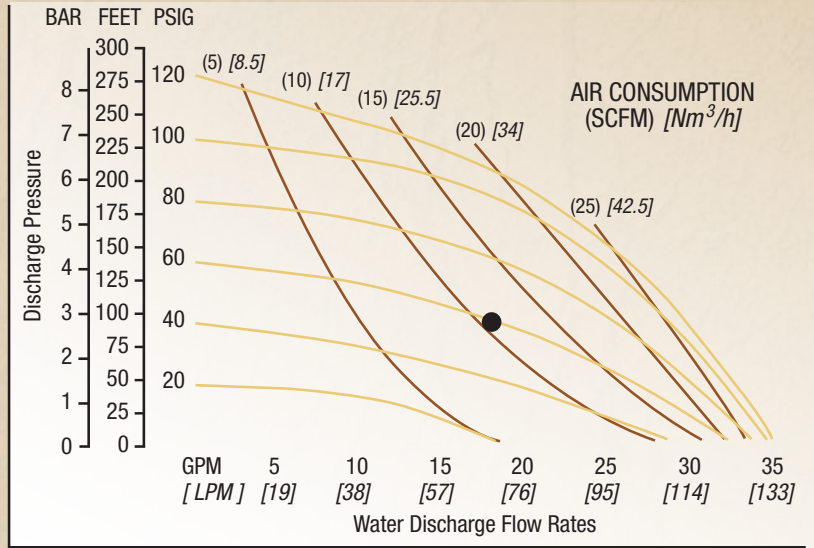
NOMAD™

PERFORMANCE DATA

NTG25



Air Inlet	6 mm (1/4")
Inlet.....	25 mm (1")
Outlet.....	19 mm (3/4")
Suction Lift	5.18 m Dry (17')
	9.45 m Wet (31')
Max. Flow Rate	132 lpm (35 gpm)
Max. Size Solids	3.2 mm (1/8")
Height	279 mm (11.0")
Width	267 mm (10.5")
Depth.....	185 mm (7.3")
Est. Ship Weight	Aluminum 12 kg (26 lbs)
	316 S.S. 11.24 kg (25 lbs)



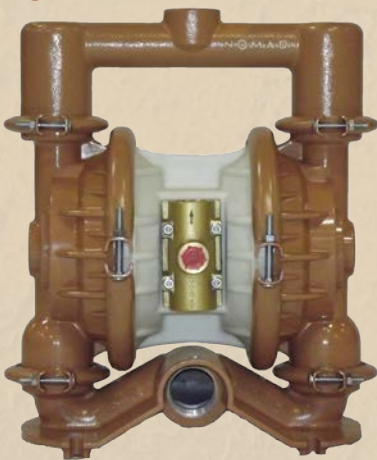
Flow rates indicated on chart were determined by pumping water.

For optimum life and performance, pumps should be specified so that daily operation parameters will fall in the center of the pump performance curve.

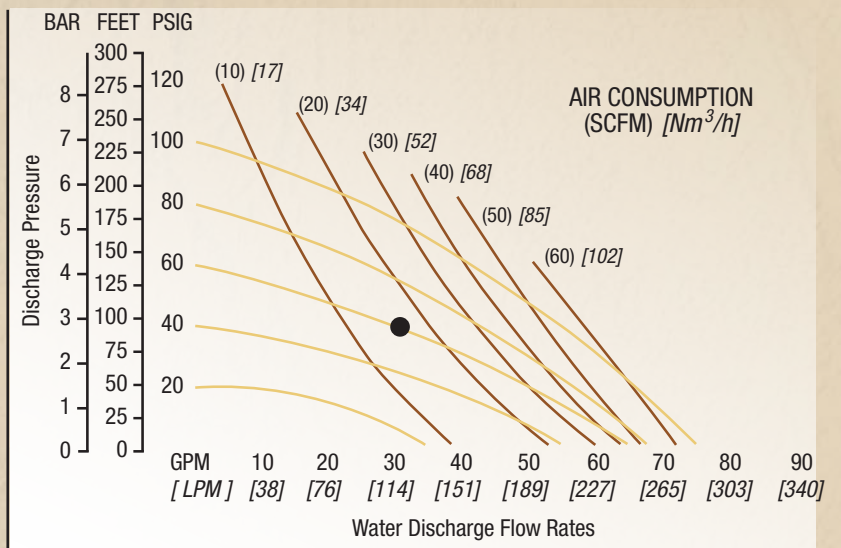
Example: To pump 68.1 lpm (18.0 gpm) against a discharge pressure head of 2.7 bar (40 psig) requires 4.1 bar (60 psig) and 18.7 Nm³/h (11 scfm) air consumption. (See dot on chart).

Caution: Do not exceed 8.6 bar (125 psig) air supply pressure. Teflon Diaphragms: reduce flow by 25%

NTG40



Air Inlet	13 mm (1/2")
Inlet.....	38 mm (1-1/2")
Outlet.....	32 mm (1-1/4")
Suction Lift	5.49 m Dry (18')
	8.53 m Wet (28')
Max. Flow Rate	288 lpm (76 gpm)
Max. Size Solids	4.8 mm (3/16")
Height	442 mm (17.4")
Width	391 mm (15.4")
Depth.....	285 mm (11.2")
Est. Ship Weight	Aluminum 17 kg (38 lbs)
	316 S.S. 26 kg (57 lbs)



Flow rates indicated on chart were determined by pumping water.

For optimum life and performance, pumps should be specified so that daily operation parameters will fall in the center of the pump performance curve.

Example: To pump 113.6 lpm (30 gpm) against a discharge pressure head of 2.7 bar (40 psig) requires 4.1 bar (60 psig) and 25.5 Nm³/h (15 scfm) air consumption. (See dot on chart).

Caution: Do not exceed 8.6 bar (125 psig) air supply pressure. Teflon Diaphragms: reduce flow by 25%

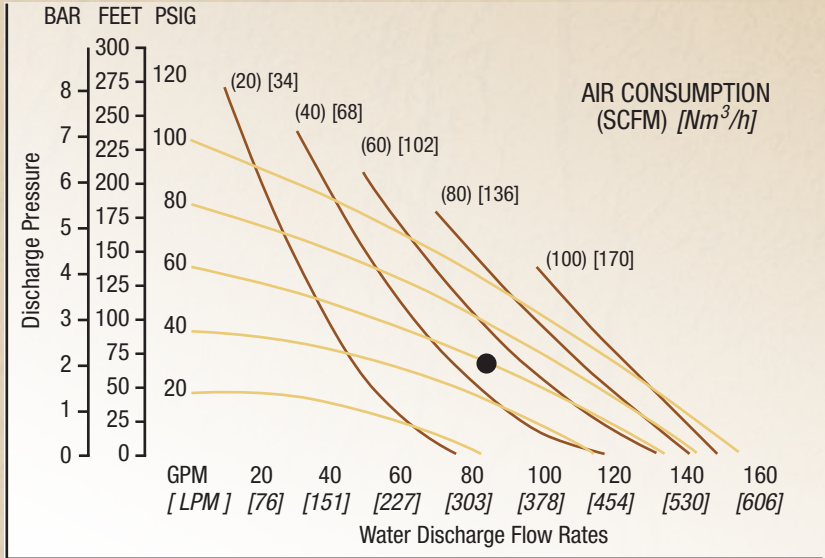
N O M A D

PERFORMANCE DATA

NTG50



Air Inlet	19 mm (3/4")
Inlet.....	.51 mm (2")
Outlet.....	.51 mm (2")
Suction Lift	6.4 m Dry (21')
	9.5 m Wet (31')
Max. Flow Rate	617 lpm (163 gpm)
Max. Size Solids.....	6.4 mm (1/4")
Height668 mm (26.3")
Width404 mm (15.9")
Depth.....	.343 mm (13.5")
Est. Ship Weight	Aluminum 33 kg (72 lbs)
	316 S.S. 58 kg (127 lbs)



H₂O flow rates listed

For best performance, run pump at "center of curve" protocol

Example: To pump 318 lpm (84 gpm) against a discharge pressure head of 2.1 bar (30 psig) requires 4.1 bar (60 psig) and 85 Nm^3/h (50 scfm) air consumption. (See dot on chart).

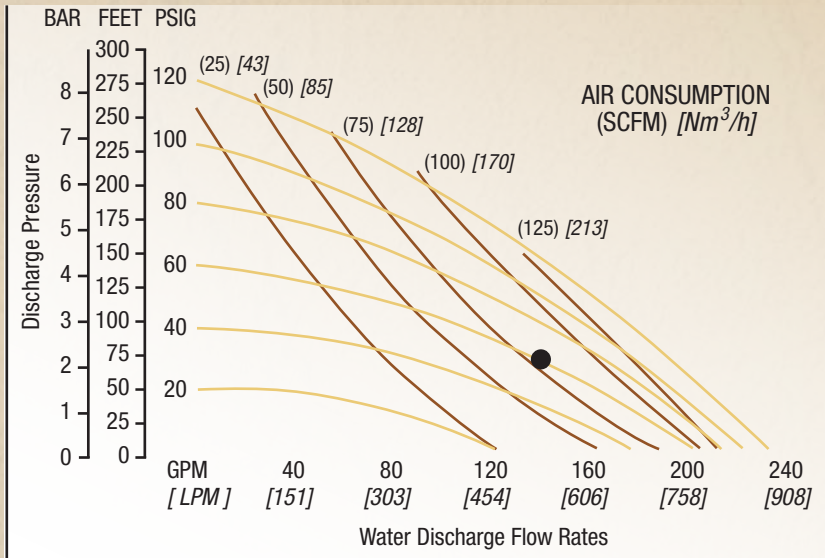
Caution: Do not exceed 8.6 bar (125 psig) air supply pressure.

Teflon Diaphragms: reduce flow by 25%

NTG80



Air Inlet	19 mm (3/4")
Inlet.....	.76 mm (3")
Outlet.....	.76 mm (3")
Suction Lift	5.5 m Dry (18')
	9.45 m Wet (31')
Max. Flow Rate	878 lpm (232 gpm)
Max. Size Solids.....	10 mm (3/8")
Height810 mm (31.9")
Width432 mm (17.0")
Depth.....	.279 mm (11.0")
Est. Ship Weight	Aluminum 53 kg (116 lbs)



H₂O flow rates listed

For best performance, run pump at "center of curve" protocol

Example: To pump 530 lpm (140 gpm) against a discharge pressure head of 2.1 bar (30 psig) requires 4.1 bar (60 psig) and 136 Nm^3/h (80 scfm) air consumption. (See dot on chart).

Caution: Do not exceed 8.6 bar (125 psig) air supply pressure.

Teflon Diaphragms: reduce flow by 25%

CELEBRATING

50

YEARS OF EXPERIENCE

**EXPERIENCE INNOVATIVE
THINKERS AND PRODUCTS**



ALL ABOUT EXPERIENCE

allpumps.com.au

1300 255 786 | sales@allpumps.com.au