



## SCN60 SOMA SINUS SODIAL®



### ADVANTAGES AND BENEFITS

- Each pump will be individually sized and fitted with the most economical parts
- Gentle transfer especially when fragile parts are pumped
- Suitable for low and high viscous products
- Low pulsation while operating
- No foaming of the product when it is pumped
- Heating / cooling available
- Simple maintenance in plant



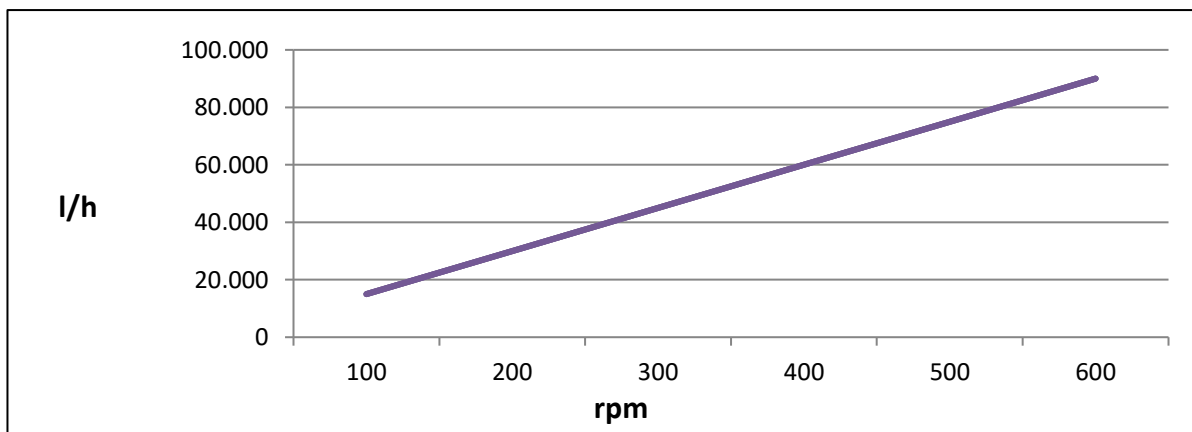
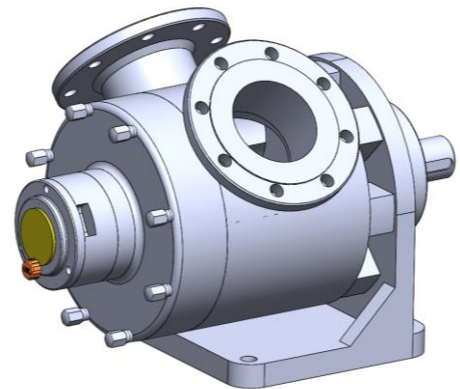
### TECHNICAL DATA

#### Performance:

- Capacity: max. 90.000 l/h
- Pressure: max. 15 bar
- Speed: max. 600 rpm
- CIP / SIP capability

#### Nozzles available:

- Flange DN 150 DIN 2633
- German Milk Fitting DN 150 DIN 11851
- Tri Clamp 6"

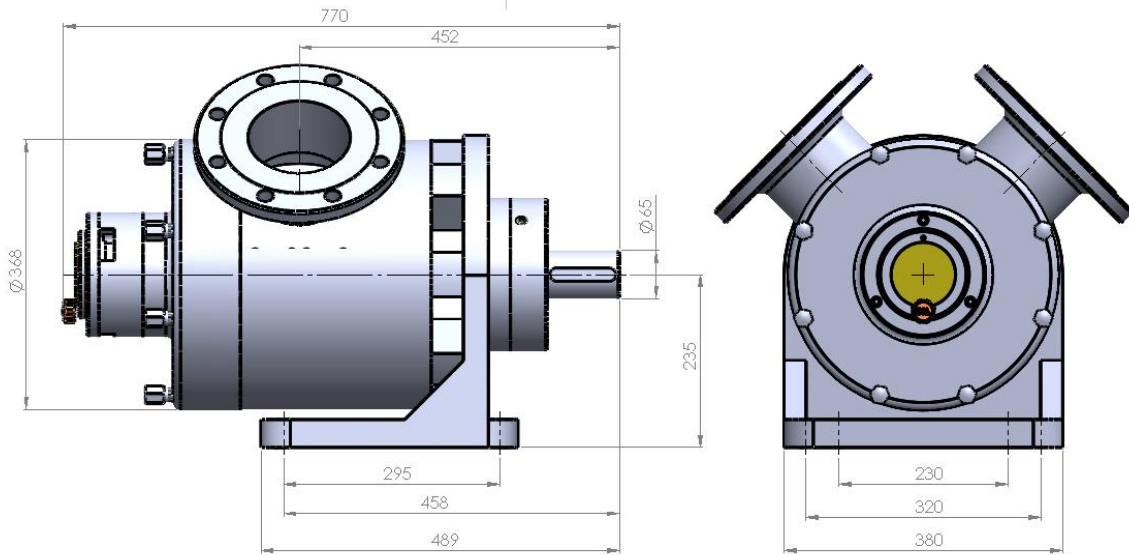




# SCN60 SOMA SINUS SODIAL®



## DIMENSIONAL DRAWING



## NOZZLE ORIENTATION

